

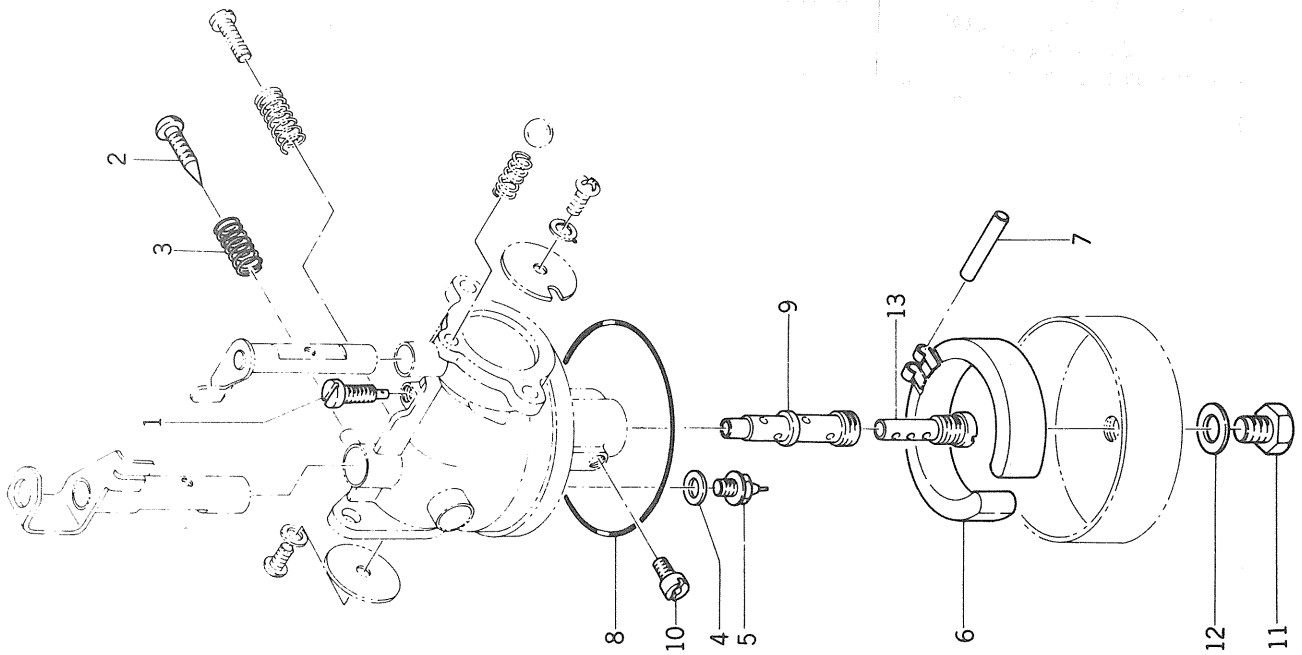
Ref No. Réf No.	Parts No. Pièces No.	Description Désignation	Model & Qty Model & Quant	Remarks Remarques	
1-111	5410-B06-00XX-X	WASHER/M6 Rondelle	2	410B0600	
1-112	5461-F06-00AX-X	WASHER, SP/M6 Rondelle frein	2	461F0600A	
1-113	5312-B06-00XX-X	NUT/M6 Ecrou	2	312B0600	
1-114	5142-921-3310-0	PIPE, INLET Tuyau d'aspiration	1	314292-1331-00 ENo. 1-113230	
1-114a	5136-351-3310-0	PIPE, INLET Tuyau d'aspiration	1	ENo. 113231- 313635-1331-00	
1-115	5142-511-3320-0	GASKET Joint	1	314251-1332-00	
1-116	5142-921-3160-0	BOLT Vis	1	314292-1316-00	
1-117	5142-921-3260-0	BOLT Vis	1	314292-1326-00	
1-118	5142-111-3810-0	WASHER Rondelle	2	314211-1381-00	
1-119	5136-878-1100-4	MAGNETO ASSY Volant magnetique	1	313687-8110-04	See Fig. 5
1-120	5231-B04-10AX-X	SCREW/M4×10 Vis	1	231B0410A	
1-121	5229-B06-28XX-X	SCREW/M6×28 Vis	2	229B0628	
1-122	5229-B04-12AX-X	SCREW/M4×12 Vis	2	229B0412A	
1-123	5136-508-1640-0	GROMMET Passe fil	1	313650-8164-00	
1-124	5136-358-5110-0	SWITCH, STOP Interrupteur	1	313635-8511-00	
1-125	5312-B08-00AX-X	NUT/M8 Ecrou	1	312B0800A	
1-126	5461-F08-00XX-X	WASHER, SP/M8 Rondelle frein	1	461F0800	
1-127	5136-506-5100-2	FILTER, FUEL ASSY Robinet decanteur	1	313650-6510-02	New part See Fig. 4
1-127a	5136-506-5100-1	FILTER, FUEL ASSY Robinet decanteur	1	313650-6510-01	Old part See Fig. 4
1-128	5136-986-5610-1	BRACKET, FUEL FILTER Support	1	313698-6561-01	
1-129	5136-506-5270-0	NUT Ecrou	1	313650-6527-00	
1-130	5460-F10-00XX-X	WASHER, SP/M10 Rondelle frein	1	460F1000	
1-131	5110-B08-14AX-X	BOLT/M8×14 Vis	2	110B0814A	
1-132	5461-F08-00XX-X	WASHER, SP/M8 Rondelle frein	2	461F0800	
1-133	5136-506-8110-1	PIPE Conduit	1	313650-6811-01	
1-134	5136-796-8120-0	CLAMP Collier	2	313679-6812-00	
1-135	5136-930-8110-0	LABEL Etiquettes	1	313693-0811-00	
1-136	5136-930-8510-0	LABEL, CAUTION Etiquettes	1	313693-0851-00	
1-137	5110-B06-12XX-X	BOLT/M6×12 Vis	2	110B0612	
1-138	5461-F06-00AX-X	WASHER, SP/M6 Rondelle frein	2	461F0600A	
1-139	5410-B06-00XX-X	WASHER/M6 Rondelle	2	410B0600	
	5151-201-5330-0	ELBOW Coude	1	315120-1533-00	
	5136-356-1910-0	TUBE Conduit	1	313635-6191-00	
		ACCESSORY			
	5136-900-9000-0	TOOL ASSY Outils	1	313690-0900-00	
	5182-900-9150-0	·SPANNER/10×13 Cle plate	1	318290-0915-00	
	5136-860-9330-0	·WRENCH, SOCKET/13×2 Cle tube	1	313686-0933-00	

Ref No. Réf N°.	Parts No. Pièces N°.	Description Désignation	Model & Q'ty Modél & Quant	Remarks Remarques
	5151-200-9450-0	•BAR Barre	1	315120-0945-00
	5112-200-9720-0	•GAUGE, THICKNESS Jauge d'épaisseur	1	311220-0972-00

Fig. 2

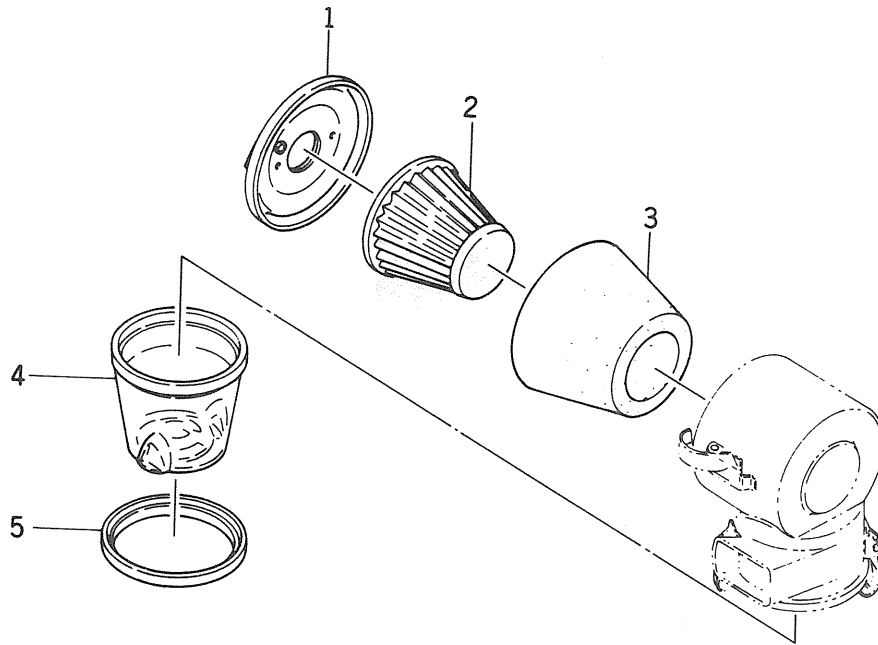
CARBURETOR

Carburateur



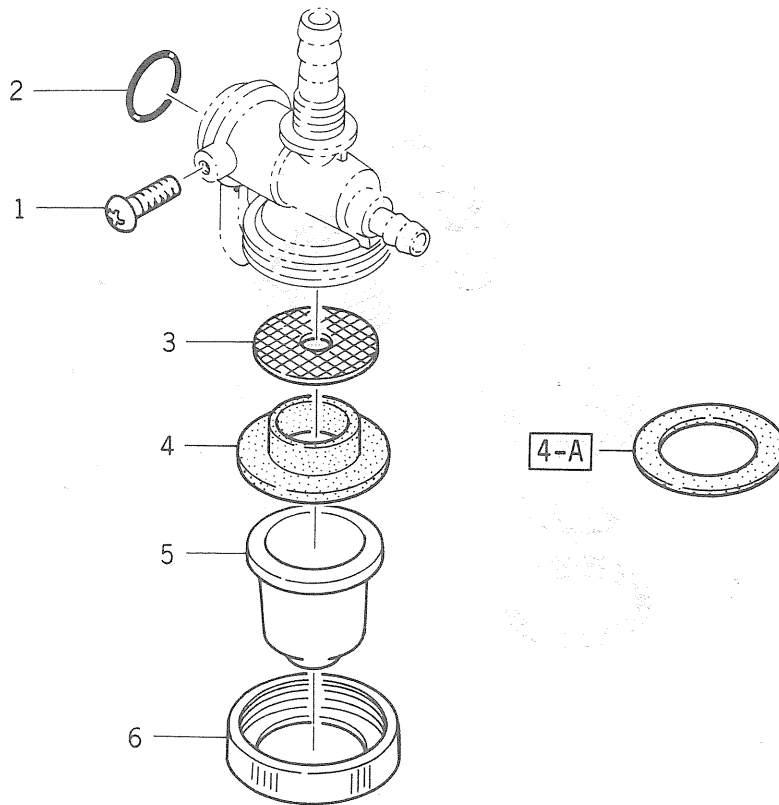
Ref No. Réf N°.	Parts No. Pièces N°.	Description Désignation	Model & Q'ty Modél & Quant	Remarks Remarques
	5136-856-1000-0	CARBURETOR ASSY Carburateur	1	313685-6100-00
2- 1	5136-506-1120-0	•JET, PILOT/45 Gicleur ralenti	1	313650-6112-00
2- 2	5136-506-1140-0	•SCREW, PILOT Vis ralenti	1	313650-6114-00
2- 3	5136-506-1160-0	•SPRING Ressort	1	313650-6116-00
2- 4	5136-506-1190-0	•GASKET Joint	1	313650-6119-00
2- 5	5136-506-1200-0	•SEAT, VALVE Clapet	1	313650-6120-00
2- 6	5136-506-1260-0	•FLOAT Flotteur	1	313650-6126-00
2- 7	5136-506-1270-0	•PIN, FLOAT Axe	1	313650-6127-00
2- 8	5136-506-1280-0	•GASKET Joint	1	313650-6128-00
2- 9	5136-506-1290-0	•NEEDLE, MAIN Emulseur	1	313650-6129-00
2-10	5136-506-1320-0	•JET, MAIN/72.5 Gicleur princ.	1	313650-6132-00
2-11	5136-506-1430-0	•BOLT Vis	1	313650-6143-00
2-12	5181-906-1590-0	•GASKET Joint	1	318190-6159-00
2-13	5136-506-1060-0	•PIPE, BLEEDER Buse	1	313650-6106-00
	5136-356-1000-1	CARBURETOR ASSY Carburateur	1	313635-6100-01 ENo. 113231-
2-10a	5136-526-1320-0	•JET, MAIN/67.5 Gicleur princ.	1	313652-6132-00

Fig. 3 AIR CLEANER  
Filtre a air



Ref No. Réf N°.	Parts No. Pièces N°.	Description Désignation	Model & Q'ty Modél & Quant	Remarks Remarques
	5136-411-3100-0	CLEANER, AIR ASSY Filtre a air	1	313641-1310-00
3- 1	5136-871-3140-0	·PLATE Plaque	1	313687-1314-00
3- 2	5136-871-3120-0	·ELEMENT Cartouche	1	313687-1312-00
3- 3	5136-871-3130-0	·ELEMENT Cartouche	1	313687-1313-00
3- 4	5136-871-3160-0	·CHAMBER, DUST	1	313687-1316-00
3- 5	5136-871-3190-0	·RING Ecrou annulaire	1	313687-1319-00
	5136-411-3100-3	CLEANER, AIR ASSY Filtre a air	1	313641-1310-03
3- 1a	5136-351-3140-0	PLATE Plaque	1	ENo. 113231- 313635-1314-00

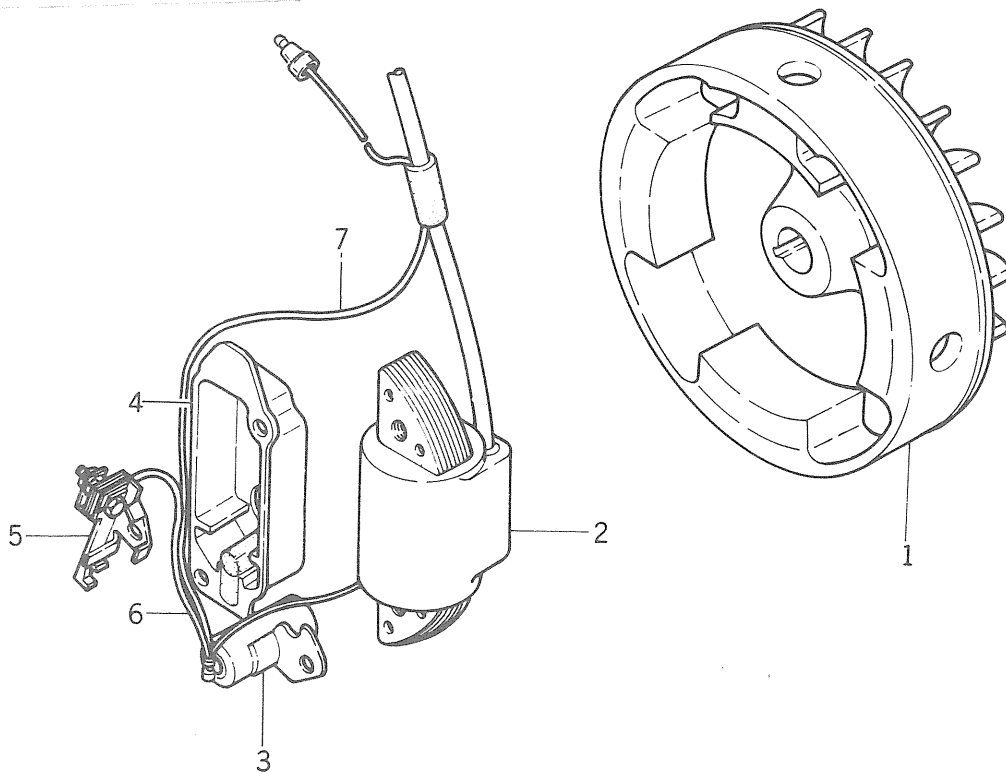
Fig. 4 FUEL FILTER  
Decanteur



Ref No. Réf N°.	Parts No. Pièces N°.	Description Désignation	Model & Q'ty Modél & Quant	Remarks Remarques
	5136-506-5100-2	FILTER, FUEL ASSY Decanteur	1	313650-6510-02
4- 1	5136-506-5170-0	·SCREW Vis	1	313650-6517-00
4- 2	5136-506-5120-0	·O-RING Joint torique	1	313650-6512-00
4- 3	5136-506-5190-0	·STRAINER Filtre	1	313650-6519-00
4- 4	5136-506-5180-2	·GASKET Joint	1	313650-6518-02
4- 5	5136-506-5210-0	·BOWL Bol	1	313650-6521-00
4- 6	5136-506-5220-0	·RETAINER Ecroû annulaire	1	313650-6522-00
		PART FOR		
	5136-506-5100-1	FILTER, FUEL ASSY Decanteur	1	313650-6510-01
4- 4a	5136-506-5180-0	·GASKET Joint	1	313650-6518-00

Fig. 5

MAGNETO  
Decanteur



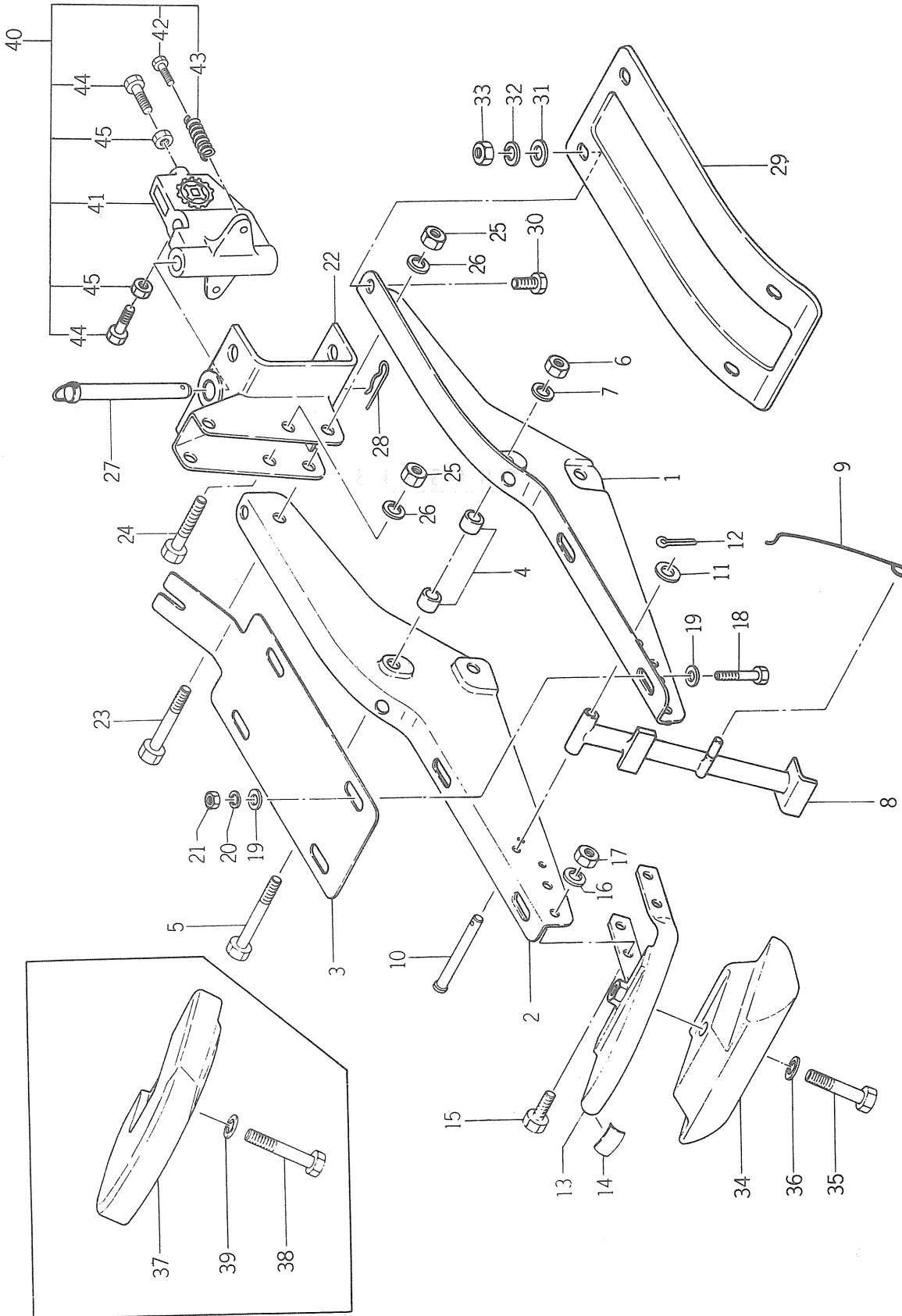
Ref No. Réf N°.	Parts No. Pièces N°.	Description Désignation	Model & Q'ty Model & Quant	Remarks Remarques
	5136-878-1100-4	MAGNETO ASSY Volant magnetique	1	313687-8110-04
5- 1	5136-508-1110-0	·FLYWHEEL Rotor	1	313650-8111-00
5- 2	5136-878-1230-0	·COIL, IGNITION Bobine d'allum.	1	313687-8123-00
5- 3	5136-018-4360-0	·CONDENSER Condensateur	1	313601-8436-00
5- 4	5136-508-4390-3	·COVER, BREAKER Couvercle	1	313650-8439-03
5- 5	5136-018-4400-0	·BREAKER Rupteur	1	313601-8440-00
5- 6	5136-018-4540-0	·WIRE, LEAD Conducteur	1	313601-8454-00
5- 7	5136-018-4550-0	·WIRE, LEAD Conducteur	1	313601-8455-00



CHASSIS



Fig. 6 FRONT FRAME (For KC350 No. 1~6750)  
Longeron



Ref No. Réf N°.	Parts No. Pièces N°.	Description Désignation	Model & Q'ty Modél & Quant		Remarks Remarques
			KC350	KC350F	
6- 1	1364-101-1000-0	FRAME, F. Longeron	1		} No. 1-6750
6- 2	1364-101-2000-0	FRAME, F. Longeron	1		
6- 3	1364-101-0010-0	BASE, ENGINE Semelle	1		
6- 4	1364-101-0020-0	SPACER Entretoise	4		
6- 5	V20126-100500	BOLT/M10×50 Vis	2		
6- 6	V30026-001000	NUT/M10 Erou	2		
6- 7	V40126-001000	WASHER, SP/M10 Rondelle frein	2		
6- 8	1364-106-1000-0	STAND Bequille	1		
6- 9	1329-106-0010-0	SPRING, STAND Ressort	1		
6-10	1329-106-0020-0	PIN, STAND Axe de bequille	1		
6-11	V41316-000800	WASHER, PL/M8 Rondelle	1		} No. 1-6750
6-12	V50016-250150	PIN, SPLIT/2.5×15×15 Goupille fendue	1		
6-13	1329-111-1000-0	BUMPER Pare-chocs	1		
6-14	1329-111-0010-0	TAPE, BUMPER Bande	1		
6-15	V20126-080200	BOLT/M8×20 Vis	4		
6-16	V40126-000800	WASHER, SP/M8 Rondelle frein	4		
6-17	V30026-000800	NUT/M8 Erou	4		
6-18	V20126-080400	BOLT/M8×40 Vis	4		
6-19	V41316-000800	WASHER/M8 Rondelle	8		
6-20	V40126-000800	WASHER, SP/M8 Rondelle frein	4		
6-21	V30026-000800	NUT/M8 Erou	4		} No. 1-6750
6-22	1364-930-1000-0	HITCH, R. Attelage	1		
6-23	V20126-100650	BOLT/M10×65 Vis	2		
6-24	V20126-100600	BOLT/M10×60 Vis	1		
6-25	V30026-001000	NUT/M10 Erou	3		
6-26	V40126-001000	WASHER, SP/M10 Rondelle frein	3		
6-27	1301-100-9010-0	PIN, KING Broche	1		
6-28	1305-931-0030-0	PIN, HAIR Attache beta	1		
6-29	1364-616-0010-0	FENDER Garde-boue	2		
6-30	V20126-080160	BOLT/M8×16 Vis	4		
6-31	V41326-000800	WASHER/M8 Rondelle	4		
6-32	V40126-000800	WASHER, SP/M8 Rondelle frein	4		
6-33	V30026-000800	NUT/M8 Erou	4		
6-34	1329-931-0010-0	WEIGHT, BALANCE Contrepoids	1		
6-35	V20126-100650	BOLT/M10×6 Vis	1		
6-36	V40126-001000	WASHER, SP/M10 Rondelle frein	1		
6-37	1329-931-0030-0	WEIGHT, BALANCE B Contrepoids	1		
6-38	V20126-100560	BOLT/M10×56 Vis	1		

Ref No. Réf N°.	Parts No. Pièces N°.	Description Désignation	Model & Q'ty Modél & Quant		Remarks Remarques
			KC350	KC350F	
6-39	V40126-001000	WASHER, SP/M10 Rondelle frein	1		
6-40	8057-006-0000-0	HITCH, CULTI ASSY Attache culti ensemble	1		★
6-41		·HITCH, CULTI Attache culti	1		△
6-42	8057-006-0020-0	·BOLT Vis	2		★
6-43	8057-006-0030-0	·SPRING Ressort	2		★
6-44	V20126-120400	·BOLT/M12×40 Vis	2		★
6-45	V30226-001200	·NUT/M12 Erou	2		★

**SERVICE MEMO**

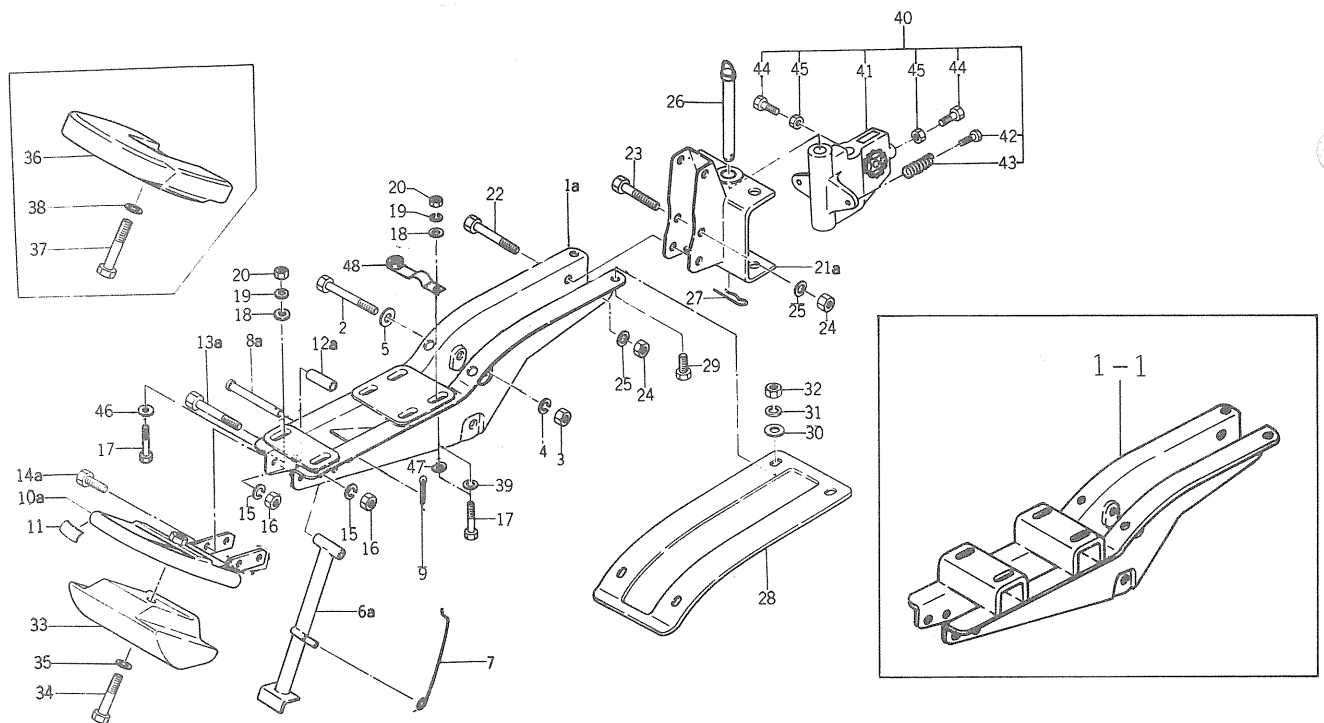
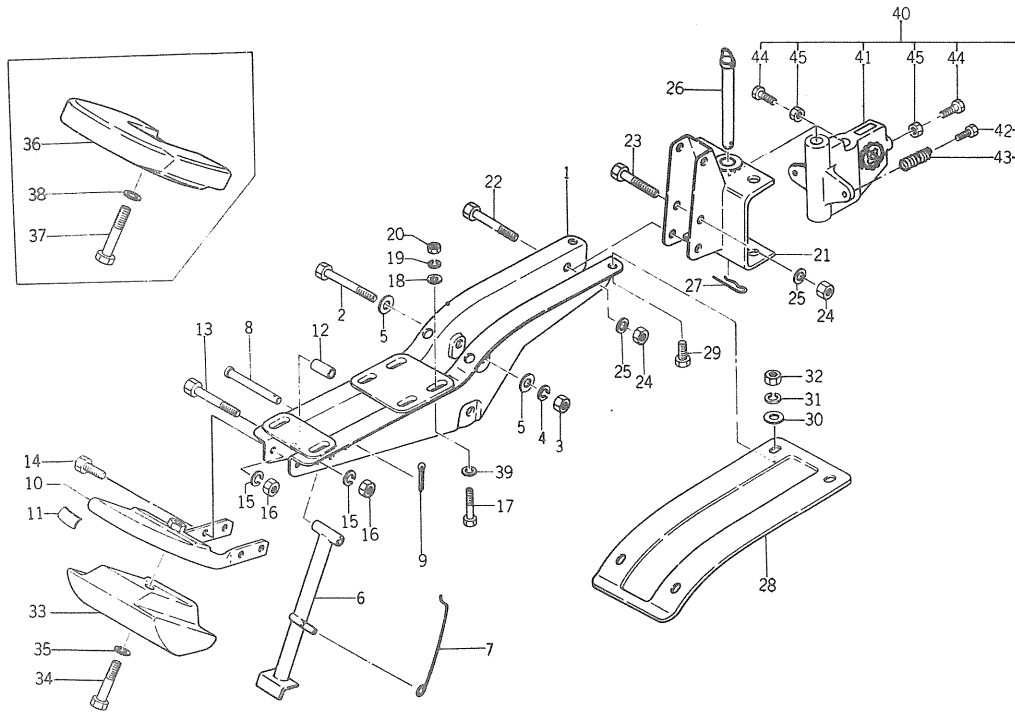
A series of horizontal dashed lines for writing.

Fig. 7

FRONT FRAME(No. 6751~)(FNo. 100001~)

Longeron

350F No. 6751~  
FNo. 100001~106930



350F FNo. 106931~  
FNo. 500001~

Ref No. Réf N°.	Parts No. Pièces N°.	Description Désignation	Model & Q'ty Modél & Quant		Remarks Remarques
			KC350	KC350F	
7- 1	1364-101-3000-0	FRAME, F. Longeron	1	1	No. 6751- FNo. 100001-106930
7- 1a	1373-101-2000-0	FRAME, F. Longeron		1	FNo. 106931- FENo. 500001-
7- 1-1	1373-102-2000-0	FRAME, F. Longeron		1	for 2cycle type
7- 2	V20126-100550	BOLT/M10×55 Vis	2	2	
7- 3	V40116-001000	NUT/M10 Ecrou	2	2	
7- 4	V40126-001000	WASHER, SP/M10 Rondelle frein	2	2	
7- 5	V41316-001000	WASHER/M10 Rondelle	4	2	
7- 6	1364-106-1000-0	STAND Bequille	1	1	FNo. 100001-106930
7- 6a	1380-106-2000-0	STAND Bequille		1	FNo. 106931- FENo. 500001-
7- 6b	1380-106-2001-0	STAND Bequille		1	
7- 7	1329-106-0010-0	SPRING, STAND Ressort	1	1	
7- 8	1329-106-0020-0	PIN, STAND Axe de bequille	1	1	FNo. 100001-106930
7- 8a	1353-106-0010-0	PIN, STAND Axe de bequille		1	{ FNo. 106931- FENo. 500001-
7- 9	V50015-250150	PIN, SPLIT/2.5×15 Goupille fendue	1	1	
7-10	1329-111-1000-0	BUMPER Pare-chocs	1	1	FNo. 100001-106930
7-10a	1373-111-2000-0	BUMPER Pare-chocs		1	{ FNo. 106931- FENo. 500001-
7-11	1329-111-0010-0	TAPE, BUMPER Bande	1	1	
7-12	1364-111-0010-0	PIPE/45 Collier	1	1	{ No. 6751- FNo. 100001-106930
7-12a	1373-111-0010-0	PIPE/52 Collier		1	{ FNo. 106931- FENo. 500001-
7-13	V20126-080700	BOLT/M8×70 Vis	1	1	FNo. 100001-106930
7-13a	V20126-080750	BOLT/M8×75 Vis		1	{ FNo. 106931- FENo. 500001-
7-14	V20126-080200	BOLT/M8×20 Vis	2	2	FNo. 100001-106930
7-14a	V20126-080160	BOLT/M8×16 Vis		2	{ FNo. 106931- FENo. 500001-
7-15	V40116-000800	WASHER, SP/M8 Rondelle frein	3	3	
7-16	V30026-000800	NUT/M8 Ecrou	3	3	
7-17	V20126-080400	BOLT/M8×40 Vis	4	4	
7-18	V41316-000800	WASHER/M8 Rondelle	3	3	
7-19	V40116-000800	WASHER, SP/M8 Rondelle frein	4	4	for 4cycle type
7-20	V30026-000800	NUT/M8 Ecrou	3	3	
7-21	1364-930-1000-0	HITCH, R. Attelage	1	1	FNo. 100001-106930
7-21a	1364-930-1001-0	HITCH, R. Attelage		1	{ FNo. 106931- FENo. 500001-
7-21-1	1373-930-2000-0	HITCH, R. Attelage		1	
7-22	V20126-100650	BOLT/M10×65 Vis	1	1	
7-23	V20126-100600	BOLT/M10×60 Vis	2	2	
7-24	V30026-001000	NUT/M10 Ecrou	3	3	
7-25	V40116-001000	WASHER, SP/M10 Rondelle frein	3	3	
7-26	1301-100-9010-0	PIN, KING Broche	1	1	
7-27	1305-931-0030-0	PIN, HAIR Attache beta	1	1	

1373-101,102,111,151 1331-932  
1380-106  
1364-616,931,932

Ref No. Réf N°.	Parts No. Pièces N°.	Description Désignation	Model & Q'ty Modél & Quant		Remarks Remarques
			KC350	KC350F	
7-28	1364-616-0010-1	FENDER Garde-boue	2	2	
7-29	V20126-080160	BOLT/M8×16 Vis	4	4	
7-30	V41326-000800	WASHER/M8 Rondelle	4	4	
7-31	V40126-000800	WASHER, SP/M8 Rondelle frein	4	4	
7-32	V30026-000800	NUT/M8 Erou	4	4	
7-33	1329-931-0010-0	WEIGHT, BALANCE Contrepoids	1	1	
7-34	V20126-100650	BOLT/M10×65 Vis	1	1	
7-35	V40126-001000	WASHER, SP Rondelle frein	1	1	
7-36	1329-931-0030-0	WEIGHT, BALANCE B Contrepoids	1	1	★
7-37	V20126-100560	BOLT/M10×56 Vis	1	1	★
7-38	V40126-001000	WASHER, SP/M10 Rondelle frein	1	1	★
7-39	2701-501-0210-0	WASHER Rondelle	4	4	No. 6751- FNo. 100001-
7-40	8057-006-0000-0	HITCH, CULTI ASSY Attache culti ensemble	1	1	★
7-41		·HITCH, CULTI Attache culti	1	1	△
7-42	8057-006-0020-0	·BOLT Vis	2	2	★
7-43	8057-006-0030-0	·SPRING Ressort	2	2	★
7-44	V20126-120400	·BOLT/M12×40 Vis	2	2	★
7-45	V30226-001200	·NUT/M12 Erou	2	2	★
7-46	1373-121-0010-0	WASHER/9×22×2 Rondelle		2	} FNo. 106931- FNo. 500001- for 4cycle type
7-47	1373-121-0020-0	WASHER Rondelle		2	
7-48	1364-121-2500-0	PLATE, SET Plaque	1	1	

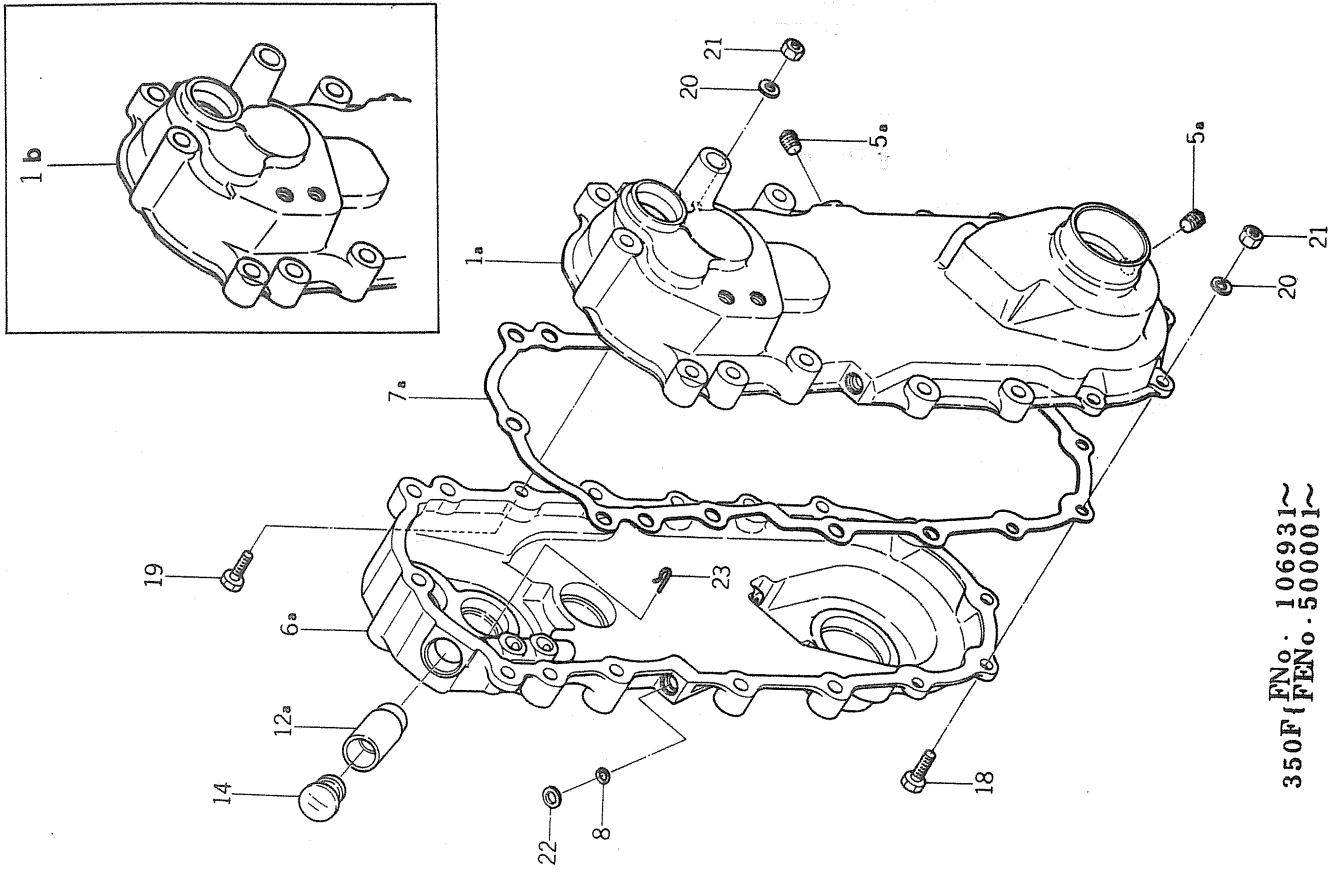
**SERVICE MEMO**

A series of horizontal dashed lines for writing.



Fig. 9

TRANSMISSION GEAR CASE (For KC350F)  
Boitier de reducteur



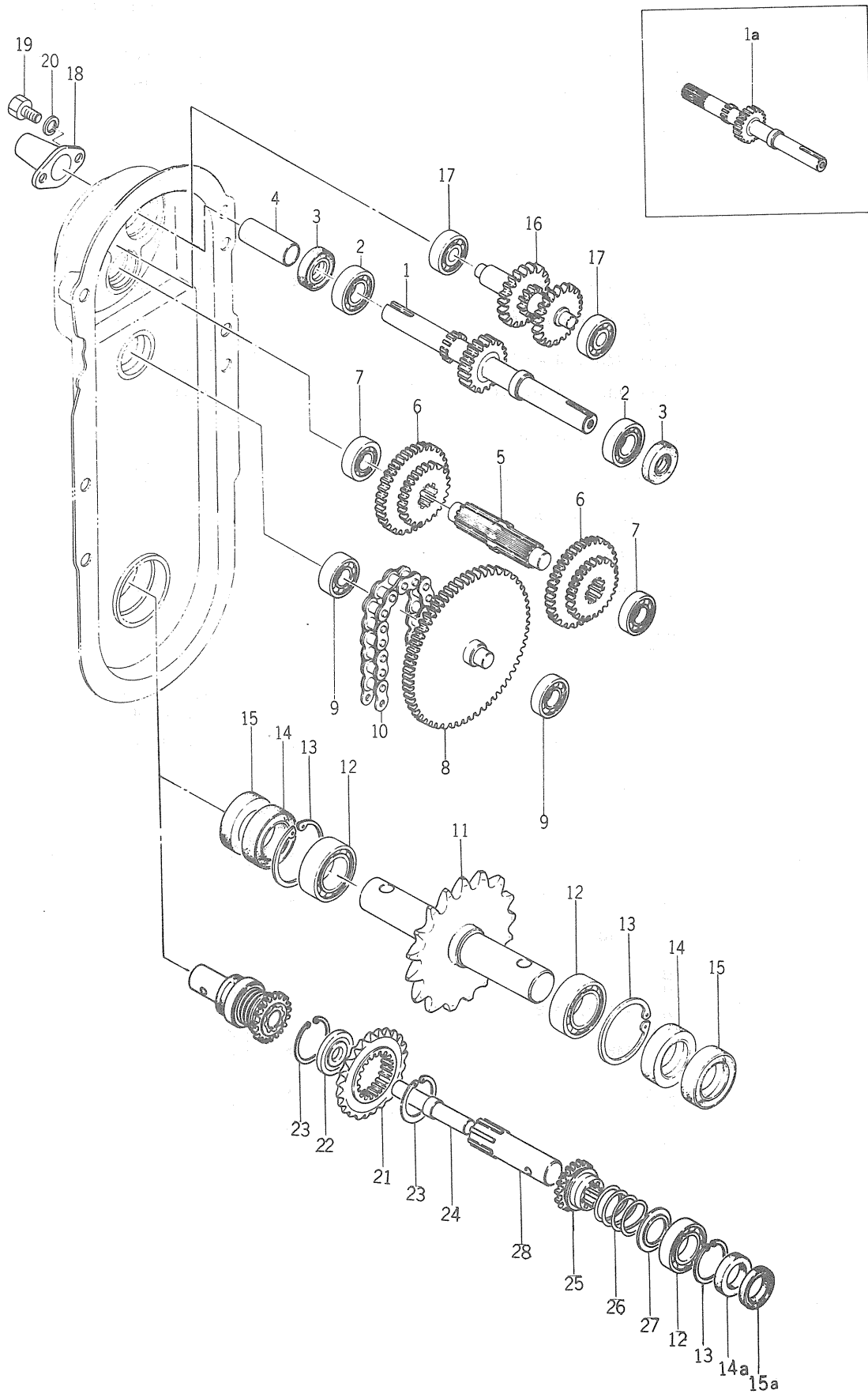
FN No. 106931~  
FENo. 500001~

Ref No. Réf N°.	Parts No. Pièces N°.	Description Désignation	Model & Q'ty Modél & Quant		Remarks Remarques
			KC350	KC350F	
9- 1	1373-216-1000-0	CASE, MAIN GEAR LH Coquille G.		1	FNo. 100001-106930
9- 1a	1373-215-0010-0	CASE, MAIN GEAR LH Coquille G.		1	FNo. 106931- FENo. 500001 - 516500
9- 1a	1373-215-0011-0	CASE, MAIN GEAR LH Coquille G.		1	F#516551~
9- 2	V20026-060100	BOLT/M6 × 10 Vis		1	
9- 3	1324-212-0040-0	PACKING, OIL LFVEL Joint		1	
9- 4	V41116-000600	WASHER/M6 Rondelle		1	
9- 5	7955-201-0260-0	PLUG, DRAIN 1/4 Bouchon		1	FNo. 100001-106930
9- 5a	7955-201-0260-0	PLUG, DRAIN 1/4 Bouchon		2	FNo. 106931- FENo. 500001 -
9- 6	1373-216-2000-0	CASE, MAIN GEAR RH Coquille D.		1	FNo. 100001-106930
9- 6a	1373-215-0020-0	CASE, MAIN GEAR RH Coquille D.		1	FNo. 106931- FENo. 500001 - 516550
9- 6b	1373-215-0021-0	CASE, MAIN GEAR RH Coquille D.		1	F#516551~
9- 7	1373-216-0010-0	PACKING, GEAR CASE Joint		1	FNo. 100001-106930
9- 7a	1373-215-0030-0	PACKING, GEAR CASE Joint		1	FNo. 106931- FENo. 500001 -
9- 8	1373-216-0020-0	O-RING/NOKA 305 Joint torique		2	
9- 9	V20026-060120	BOLT/M6 × 12 Vis		21	} FNo. 100001-106930
9-10	V30026-000600	NUT/M6 Erou		21	
9-11	V40126-000600	WASHER, SP Rondelle frein		21	
9-12	1364-216-3000-0	PIPE, OIL Tubulure		1	FNo. 100001-106930
9-12a	1373-215-0040-0	PIPE, OIL Tubulure		1	FNo. 106931- FENo. 500001 -
9-13	1364-216-0020-0	PACKING, RUBBER Joint		1	FNo. 100001-106930
9-14	1366-706-0010-0	CAP, OIL/23 Bouchon		1	
9-15	V20026-060160	BOLT/M6 × 16 Vis		2	} FNo. 100001-106930
9-16	V30026-000600	NUT/M6 Erou		2	
9-17	V40126-000600	WASHER, SP/M6 Rondelle frein		2	
9-18	V20126-080300	BOLT/M8 × 30 Vis		7	} FNo. 106931- FENo. 500001 -
9-19	V20126-080250	BOLT/M8 × 25 Vis		1	
9-20	V40116-000800	WASHER, SP/M8 Rondelle frein		8	
9-21	V30026-000800	NUT/M8 Erou		8	
9-22	1373-215-0060-0	BUSH Coussinet		2	
9-23	1373-215-0050-0	PIN, HAIR Attache beta		1	

Fig. 10

TRANSMISSION GEAR

Reducteur



Ref No. Réf N°.	Parts No. Pièces N°.	Description Désignation	Model & Q'ty Modél & Quant		Remarks Remarques
			KC350	KC350F	
10- 1	1364-217-1000-0	SHAFT, MAIN/22T Arbre primaire	1	1	~No. 9660 ~FNo. 511150
10- 1a	1364-214-2000-0	SHAFT, MAIN/22T Arbre primaire	1	1	No. 9661- FNo. 511151-
10- 2	V60011-062030	BEARING, RB/6203 Roulement	2	2	
10- 3	V74011-735070	SEAL, OIL/SC17357 Bague d'étancheite	2	2	
10- 4	1364-217-0010-0	CAP. SHAFT/17×50 Chapeau d'arbre	1		No. 1-6750
10- 5	1364-218-0010-0	SHAFT, CHANGE Arbre secondaire	1	1	
10- 6	1364-218-0020-0	GEAR, SHIFT/25-37T Baladeur	2	2	
10- 7	V60011-062020	BEARING, RB/6202 Roulement	2	2	
10- 8	1364-219-1000-0	SHAFT, COUNTER Arbre intermediaire	1		No. 1-6750
10- 8a	1364-219-1001-0	SHAFT, COUNTER Arbre intermediaire	1	1	No. 6751-
10- 9	V60011-062020	BEARING, RB/6202 Roulement	2		No. 1-6750
10- 9a	V60011-063020	BEARING, RB/6302 Roulement	2	2	No. 6751-
10-10	1364-219-0010-0	CHAIN, ROLLER Chaîne	1		No. 1-6750
10-10a	1364-219-0010-0	CHAIN, ROLLER Chaîne	1	1	No. 6751-
10-11	1364-225-1000-0	SHAFT, WHEEL Fusse	1		
10-12	V60011-060060	BEARING, RB/6006 Roulement	2	2	
10-13	V70514-005500	RING, SNAP/C 55 Collet d'axe	2	2	
10-14	V74413-055120	SEAL, OIL/TC305512 Bague d'étancheite	2	2	FNo. 100001-106930
10-14a	V74413-050110	SEAL, OIL/TC305011 Bague d'étancheite		2	FNo. 106931- FENo. 500001-
10-15	V74213-055050	SEAL, OIL/VC30555 Bague d'étancheite	2	2	FNo. 100001-106930
10-15a	V74213-050080	SEAL, OIL/30508 Bague d'étancheite		2	FNo. 106931- FENo. 500001-
10-16	1364-226-1000-0	SHAFT, BACK/22T Arbre	1	1	
10-17	V60011-062010	BEARING, RB/6201 Roulement	2	2	
10-18	1346-216-0030-0	CAP, SHAFT/24×50 Chapeau d'arbre		1	FNo. 100001-106930
10-18a	1364-216-0030-0	CAP, SHAFT/24×50 Chapeau d'arbre	1	1	FNo. 106931- FENo. 500001-
10-19	V20026-060100	BOLT/M6×10 Vis	2	2	
10-20	V40116-000600	WASHER, SP/M6 Rondelle frein	2	2	No. 6751-
10-21	1373-225-0030-0	SPROCKET, DRIVE/22T Pignon		1	
10-22	1373-225-0010-0	COLLAR, WHEEL SHAFT Arbre de roues		1	
10-23	V70514-007800	RING, SNAP/C 78 Collet d'axe		2	
10-24	1337-225-0070-0	PIN, WHEEL SHAFT Arbre		1	
10-25	1373-225-0050-0	GEAR, SIDE CLUTCH/26T Clabot		2	
10-26	1351-225-0010-0	SPRING, SIDE CLUTCH Ressort		2	
10-27	1373-225-0040-0	PLATE Support		2	
10-28	1373-225-0020-0	SHAFT, WHEEL Fusse		2	