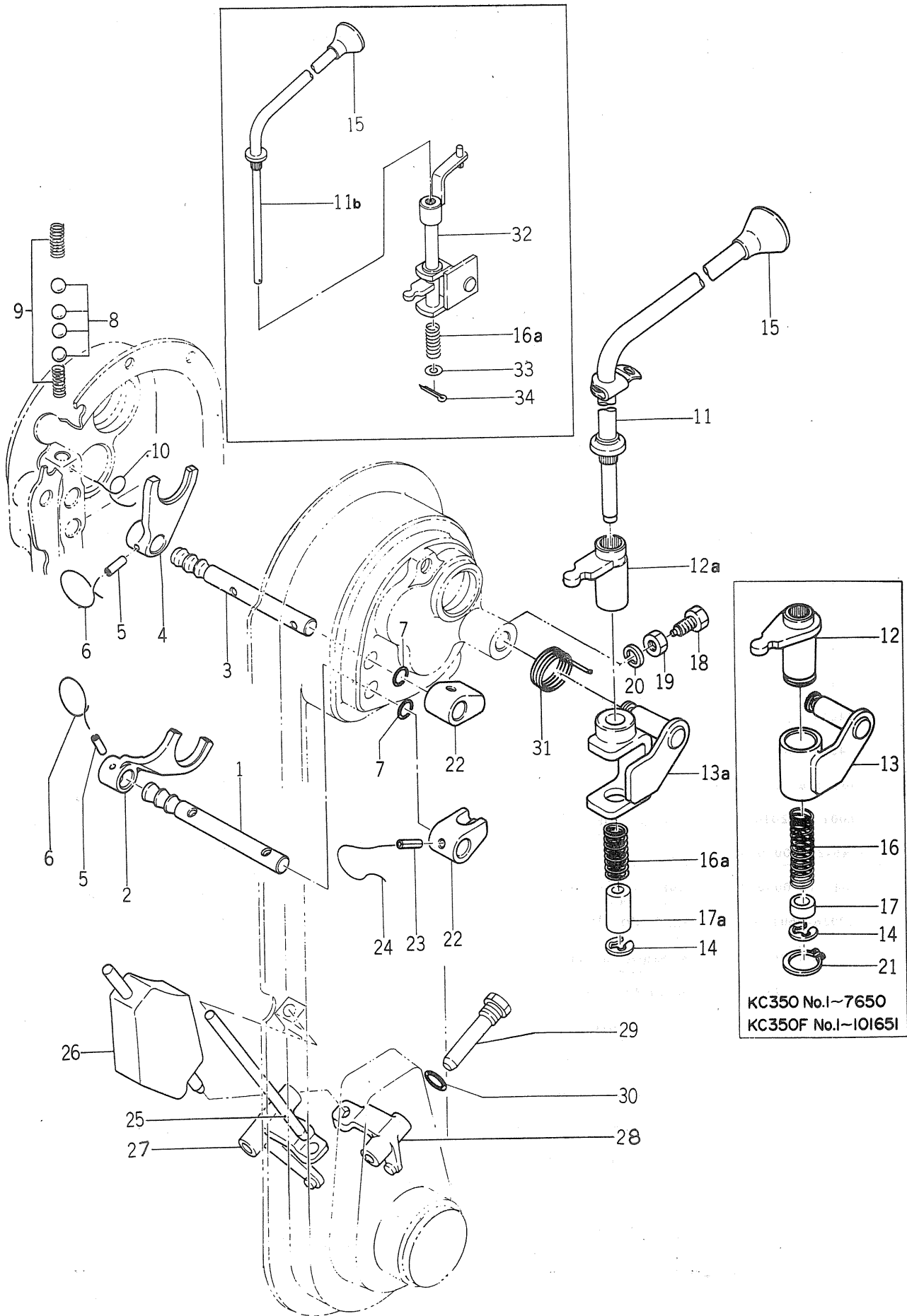


Fig. 11

SHIFTER

Fourchettes



KC350 No.1~7650
KC350F No.1~101651

Ref No. Réf No.	Parts No. Pièces No.	Description Désignation	Model & Q'ty Modél & Quant		Remarks Remarques
			KC350	KC350F	
11- 1	1364-229-0010-0	STAY, MAIN SHIFTER Axe de fourchette	1	1	
11- 2	1364-229-0020-0	SHIFTER, MAIN Fourchette	1	1	
11- 3	1364-229-0030-0	STAY, BACK SHIFTER Axe de fourchette	1	1	
11- 4	1364-229-0040-0	SHIFTER, BACK Fourchette	1	1	
11- 5	V58114-040220	PIN, SPRING/4×22 Goupille elastique	2	2	
11- 6		WIRE/1.2×150 Fil	2	2	
11- 7	V72010-240120	O-RING/P12 Joint torique	2	2	
11- 8	V68010-000100	BALL, STEEL 5/16 Bille	4	4	
11- 9	1302-225-0030-0	SPRING, SHIFTER Ressort	2	2	
11-10		WIRE/1.6×35 Fil	1	1	
11-11	1364-403-1000-0	LEVER, SHIFT Lever	1	1	No. 1-7650 FNo. 1-101651
11-11a	1364-403-4000-0	LEVER, SHIFT Lever	1	1	No. 7651-9660 FNo. 101652-
11-11b	1364-413-2000-0	LEVER, SHIFT Lever	1	1	No. 9661-
11-12	1364-403-2000-0	ARM, SHIFT Selecteur	1	1	FENo. 511151- No. 1-7650
11-12a	1364-403-5000-0	ARM, SHIFT Selecteur	1	1	FNo. 1-101651 No. 7651-9660
11-13	1364-403-3000-0	SUPPORT, LEVER Support	1	1	FNo. 101652-
11-13a	1364-403-6000-0	SUPPORT, LEVER Support	1	1	No. 1-7650 FNo. 1-101651 No. 7651-9660 FNo. 101652-
11-14	V71024-000700	RING, SNAP/E7 Collet d'axe	1	1	
11-15	3555-102-0140-0	GRIP, SHIFT LEVER Poignee	1	1	
11-16	1364-401-0010-0	SPRING, PRESS/57 Ressort	1	1	No. 1-7650 FNo. 1-101651
11-16a	1364-403-0050-0	SPRING, PRESS/39 Ressort	1	1	No. 7651- FNo. 101652-
11-17	1364-403-0020-0	COLLAR/10×16×8 Collier	1	1	No. 1-7650 FNo. 1-101651
11-17a	1364-403-0060-0	COLLAR/10×16×29 Collier	1	1	No. 7651- FNo. 101652-
11-18	1364-403-0030-0	BOLT, SET/8×25 Vis	1	1	
11-19	V30226-000800	NUT/M8 Erou	1	1	
11-20	V40116-000800	WASHER, SP/M8 Rondelle frein	1	1	
11-21	V70414-002100	RING, SNAP/C21 Collet d'axe	1	1	No. 1-7650 FNo. 1-101651
11-22	1364-403-0040-0	BOSS, CHANGE Collier	2	2	
11-23	V58014-040220	PIN, SPRING/4×22 Goupille elastique	2	2	
11-24		WIRE/1.2×150 Fil	2	2	
11-25	1373-230-0010-0	ROD, LH Doigt G.		1	
11-26	1373-230-1000-0	ROD, RH Doigt D.		1	
11-27	1373-230-0020-0	SHIFTER, SIDE CLUTCH LH Fourchette de clabotage G.		1	
11-28	1373-230-0030-0	SHIFTER, SIDE CLUTCH RH Fourchette de clabotage D.		1	
11-29	1373-230-0040-0	PIN, SIDE CLUTCH Pivot		2	FNo. 100001-106930
11-29a	1373-231-0010-0	PIN, SIDE CLUTCH Pivot		2	FNo. 106931- FENo. 500001-
11-30	V72010-040100	O-RING/P10A Joint torique		2	FNo. 100001-106930
11-30a	V72010-240120	O-RING/P12 Joint torique		2	FNo. 106931- FENo. 500001-

Ref No. Réf N°.	Parts No. Pièces N°.	Description Désignation	Model & Q'ty Modél & Quant		Remarks Remarques
			KC350	KC350F	
11-31	1364-403-0080-0	SPRING, TORQUE/36 Ressort	1	1	FNo. 104881-106930 No. 8311-9660
11-31a	1364-403-0081-0	SPRING, TORQUE/36 Ressort	1	1	FNo. 106931- FENo. 500001-511150
11-32	1364-413-2100-0	LEVER, SELECT Lever	1	1	
11-33	V41316-000800	WASHER/M8 Rondelle	1	1	No. 9661- FENo. 511151-
11-34	V50015-200160	PIN, SPLIT/2 x 15 Goupille fendue	1	1	

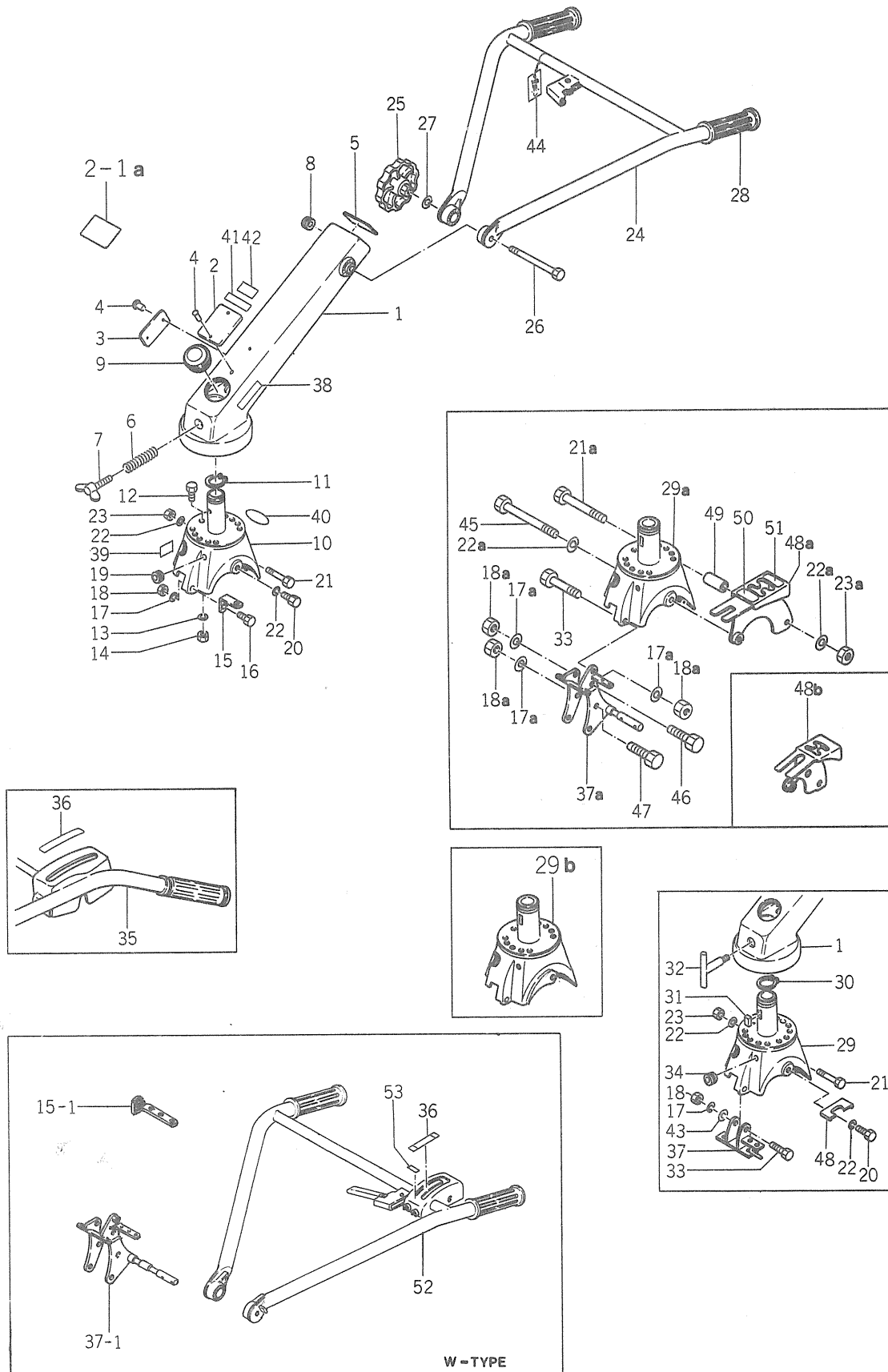
SERVICE MEMO

A series of horizontal dashed lines for writing, spanning the width of the page.

Fig. 12

HANDLE FRAME

Mancherons 432



Ref No. Réf N°.	Parts No. Pièces N°.	Description Désignation	Model & Q'ty Modél & Quant		Remarks Remarques
			KC350	KC350F	
12- 1	1364-301-1000-0	FRAME, HANDLE Age	1		No. 1-2250
12- 1a	1364-301-1001-0	FRAME, HANDLE Age	1		No. 2251-2391
12- 1b	1364-301-1002-0	FRAME, HANDLE Age	1		No. 2392-6750
12- 1c	1364-301-1003-0	FRAME, HANDLE Age	1	1	No. 6751-7250 FNo. 1-100839
12- 1d	1364-301-1004-1	FRAME, HANDLE Age	1	1	No. 7251- FNo. 100840-
12- 1e	1364-301-1005-1	FRAME, HANDLE Age		1	ⓑ
12- 2	1364-951-0012-0	MARK, MODEL A Plaquette	1		No. 6751-
12- 2-1	1373-951-0011-0	MARK, MODEL Plaquette		1	FNo. 100001-
12- 2-1a	1373-951-0012-0	MARK, MODEL Plaquette		1	ⓑ
12- 3	1329-901-0020-0	PLATE, LICENCE Plaque de licence	1		No. 1-6750
12- 4	V29120-200050	RIVET/2×5 Rivet	2	2	ⓓ
12- 5	1364-902-0010-0	MARK, SHIFT Repere de vitesses	1	1	No. 1-8310 FNo. 100001-104880
12- 5a	1364-952-0020-0	MARK, SHIFT Repere de vitesses	1	1	No. 8311- FNo. 104881-
12- 6	1364-301-0010-0	SPRING, PRESS/34 Ressort	1		} No. 1-6750
12- 7	V27016-100360	BOLT, WING/M10×36 Vis	1		
12- 8	1404-621-0300-0	GROMMET Oeillet	1		
12- 9	1364-301-0030-0	CAP, HANDLE Bouchon	1	1	} No. 1-6750
12-10	1364-301-2000-0	BRACKET, HANDLE Support	1		
12-11	V70414-003600	RING, SNAP/C 36 Collet d'axe	1		
12-12	V20126-080160	BOLT/M8×16 Vis	1		
12-13	V40126-000800	WASHER, SP/M8 Rondelle frein	1		
12-14	V30026-000800	NUT/M8 Erou	1		
12-15	1364-301-0020-0	SUPPORT, WIRE Support	1		} No. 6751-
12-15a	1364-401-1000-0	SUPPORT, WIRE Support	1		
12-15-1	1364-451-2000-0	SUPPORT, WIRE Support	1		for W-type
12-16	V20126-100450	BOLT/M10×45 Vis	1		} FNo. 100001-106930
12-17	V40116-001000	WASHER, SP/M10 Rondelle frein	1	1	
12-17a	V40116-001000	WASHER, SP/M10 Rondelle frein		3	FNo. 106931- FNo. 500001-
12-18	V30026-001000	NUT/M10 Erou	1	1	FNo. 100001-106930
12-18a	V30026-001000	NUT/M10 Erou		3	FNo. 106931- FNo. 500001-
12-19	1404-621-0300-0	GROMMET, SMALL Oeillet	1		No. 1-6750
12-20	V20126-100160	BOLT/M10×16 Vis	2	2	} FNo. 100001-106930
12-21	V20126-100600	BOLT/M10×60 Vis	1	1	
12-21a	V20126-101000	BOLT/M10×100 Vis	1	1	FNo. 106931- FNo. 500001-
12-22	V40116-001000	WASHER, SP/M10 Rondelle frein	3	3	FNo. 100001-106930
12-22a	V40116-001000	WASHER, SP/M10 Rondelle frein		2	FNo. 106931- FNo. 500001-
12-23	V30026-001000	NUT/M10 Erou	1	1	FNo. 100001-106930
12-23a	V30026-001000	NUT/M10 Erou		2	FNo. 106931- FNo. 500001-

Ref No. Réf N°.	Parts No. Pièces N°.	Description Désignation	Model & Q'ty Modél & Quant		Remarks Remarques
			KC350	KC350F	
12-24	1364-311-1000-0	HANDLE Mancheron delta	1		No. 1-2250
12-24a	1364-311-1001-0	HANDLE Mancheron delta	1		No. 2251-2391
12-24b	1364-311-1002-0	HANDLE Mancheron delta	1		
12-25	1364-311-2000-0	KNOB, SET Fermeture	1	1	
12-26	V20046-101400	BOLT/M10×140 8T Vis	1	1	
12-27	V40116-001000	WASHER, SP/M10 Rondelle frein	1	1	
12-28	2100-401-0010-0	GRIP, HANDLE Poignée	2	2	
12-29	1364-301-2001-0	BRACKET, HANDLE Support	1	1	No. 6751- FNo. 100001-106930 FNo. 106931- FNo. 500001-516550
12-29a	1373-301-2000-0	BRACKET, HANDLE Support		1	
12-29b	1373-301-2001-0	BRACKET, HANDLE Support		1	F#516551~
12-30	V70414-005500	RING, SNAP/C 55 Collet d'axe	1	1	
12-31	1364-301-0040-0	METAL, LOCK Coquille	1	1	
12-32	1364-301-3000-0	BOLT, SET Vis	1	1	No. 6751-
12-33	V20126-100500	BOLT/M10×50 Vis	1	1	
12-34	1364-301-0050-0	GROMMET/16×20 Oeillet	1	1	
12-35	1373-311-1000-0	HANDLE Mancheron delta		1	
12-36	1351-952-0020-0	MARK, CLUTCH Etiquette		1	1 used for KC350-W
12-37	1373-401-2000-0	SUPPORT, WIRE Support		1	FNo. 100001-106930
12-37a	1373-401-2100-0	SUPPORT, WIRE Support		1	FNo. 106931- FNo. 500001~
12-37-1	1373-451-2000-0	SUPPORT, WIRE Support		1	for W-type
12-38	1368-953-0010-0	MARK, CAUTION A Etiquette	1	1	
12-39	1368-953-0020-0	MARK, CAUTION B Etiquette	1	1	
12-40	4114-606-0030-0	MARK, ISO Etiquette	1	1	Abolished
12-41	1324-957-0120-0	MARK, DISTINCTION Etiquette	1	1	
12-42	1331-954-0060-0	MARK Etiquette	1	1	
12-43	V41316-001000	WASHER/M10 Rondelle	1	1	No. 8311- FNo. 104881-106930
12-43a	V41316-001000	WASHER/M10 Rondelle		2	FNo. 106931- FNo. 500001~
12-44	1364-902-0090-0	TAG, OIL CAUTION Etiquette	1	1	
12-45	V20126-101400	BOLT/M10×140 Vis		1	FNo. 106931- FNo. 500001~
12-46	V20126-100700	BOLT/M10×70 Vis		1	FNo. 106931- FNo. 500001~
12-47	V20126-100850	BOLT/M10×85 Vis		1	
12-48	1364-403-0070-0	GUIDE, SHIFT LEVER Grille de vitesses	1	1	No. 8311- FNo. 104881-
12-48a	1380-612-2120-0	GUIDE, SHIFT LEVER Grille de vitesses	1		
12-48b	1373-613-2000-0	GUIDE, SHIFT LEVER Grille de vitesses		1	
12-49	1380-612-0010-0	PIPE/38 Tubulure	1	1	
12-50	1364-952-0030-0	MARK, SHIFT A Repere de vitesses	1	1	
12-51	1364-952-0040-0	MARK, SHIFT B Repere de vitesses	1	1	
12-52	1380-311-2000-0	HANDLE, SHIFT Mancheron delta	1	1	} for W-type
12-53	1352-952-0010-0	MARK, CLUTCH A Etiquette	1	1	

SERVICE MEMO

A series of horizontal dashed lines for writing.

Fig. 13

CONTROL SYSTEM

Commandes

REVISED DRAWING

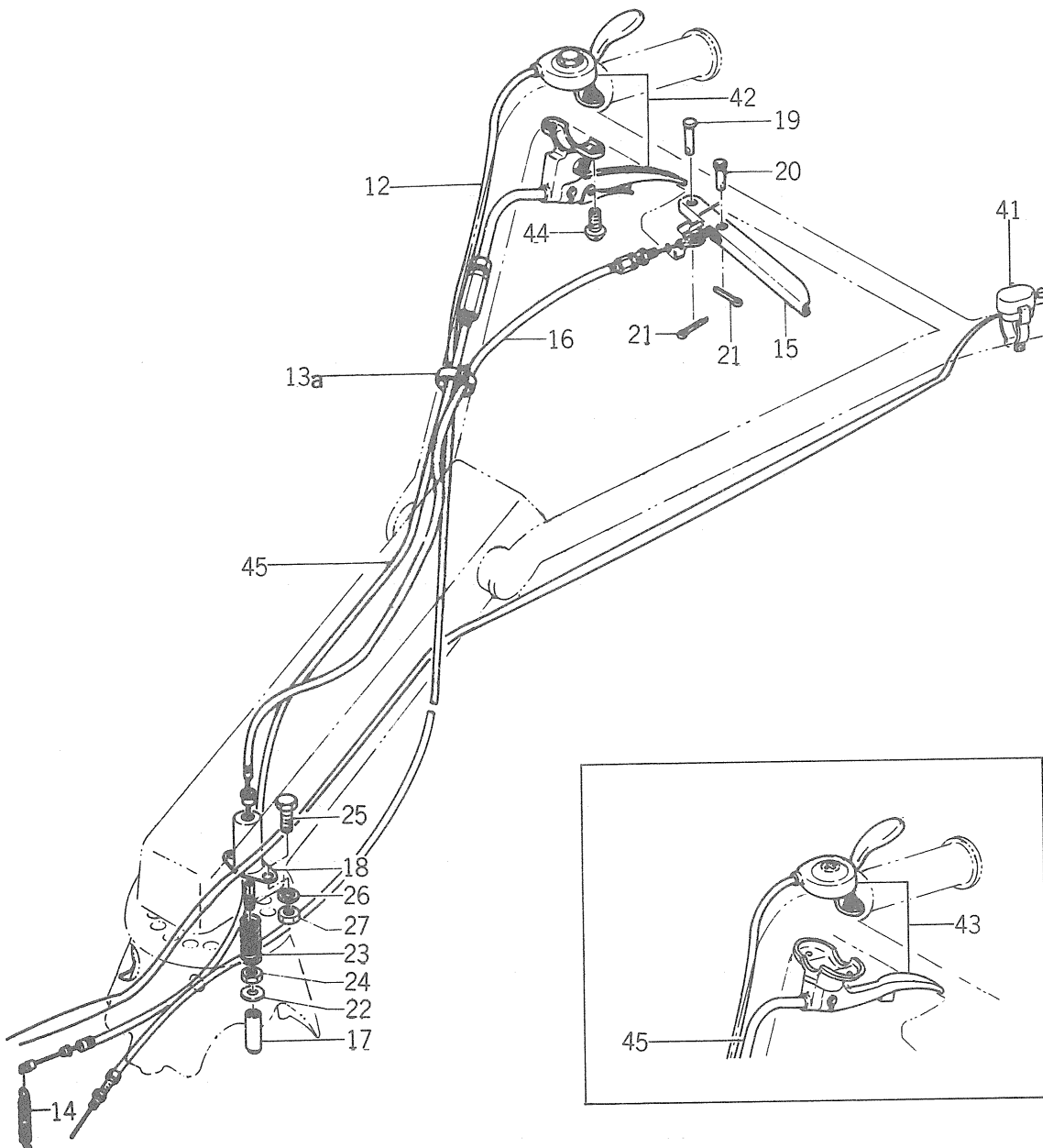
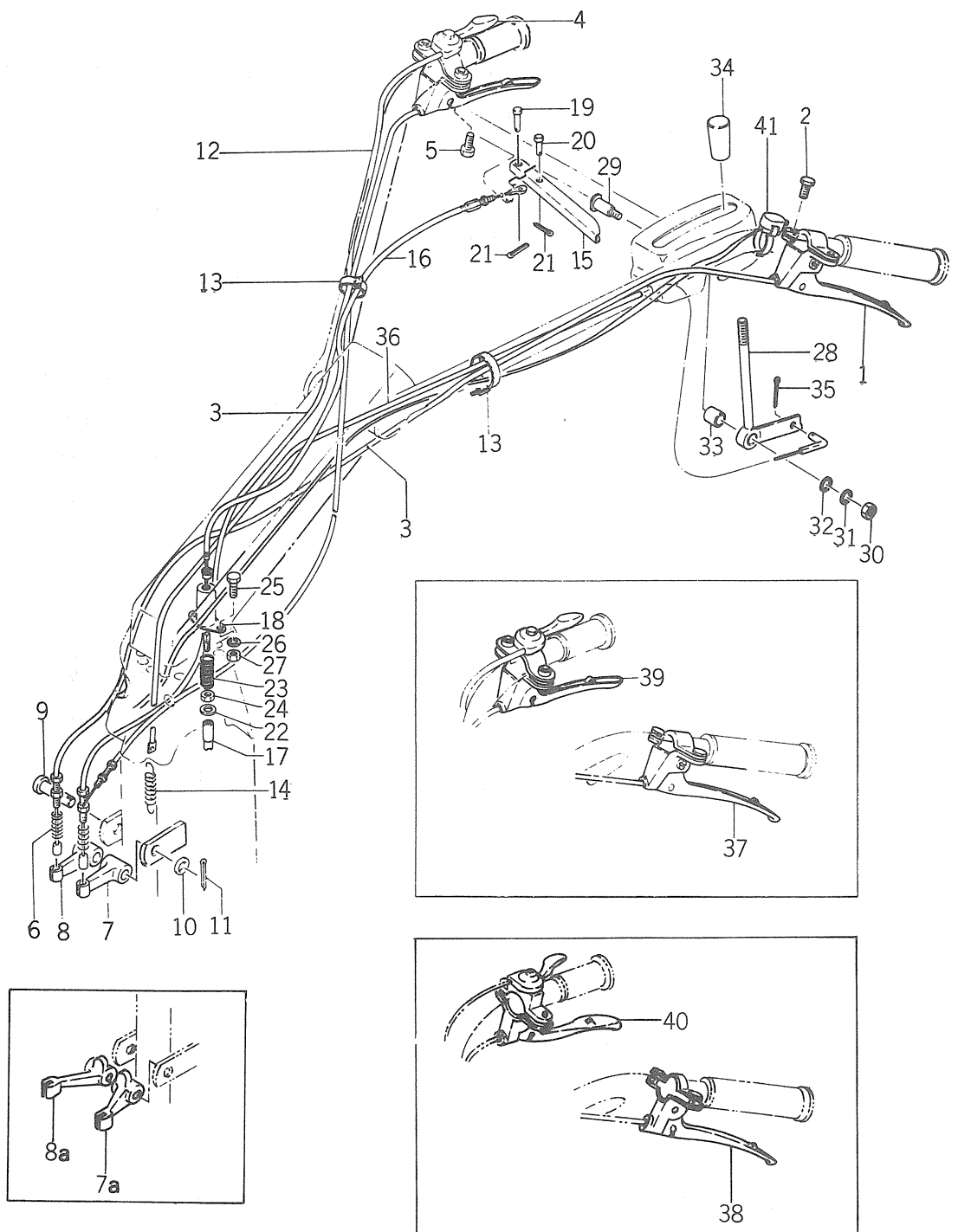


Fig. 13

CONTROL SYSTEM

Commandes

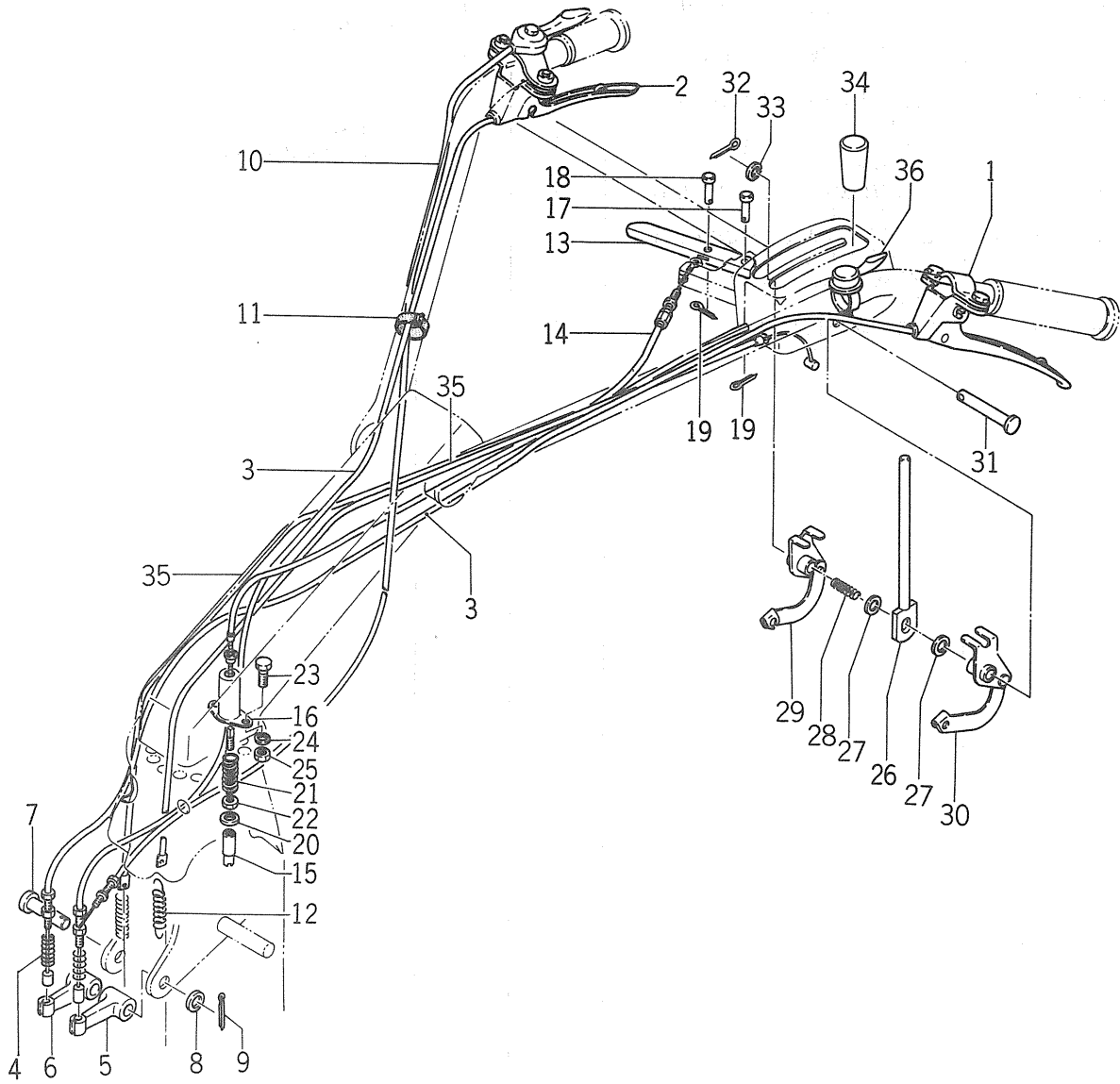


Ref No. Réf N°.	Parts No. Pièces N°.	Description Désignation	Model & Q'ty Modél & Quant		Remarks Remarques
			KC350	KC350F	
13- 1	1351-400-0510-0	LEVER, SIDE CLUTCH ASSY Poignée, G.		1	FNo. 1-101350
13- 2	V20025-060300	·BOLT/M6×30 Vis		2	
13- 3	1373-406-0010-0	WIRE, SIDE CLUTCH Cable de clabotage		2	
13- 4	1351-400-0520-0	LEVER, THROTTLE SET Manette des gaz		1	FNo. 1-101350
13- 5	V20025-060250	·BOLT/ 6×25 Vis		1	
13- 6	1373-406-0020-0	SPRING, PRESS/100 Ressort		2	
13- 7	1373-406-0030-0	ARM, SIDE CLUTCH LH Etrier, G.		1	FNo. 100001-106930 FNo. 500001-501750
13- 7a	1373-406-0031-0	ARM, SIDE CLUTCH LH Etrier, G.		1	FNo. 106931- FNo. 501751-
13- 8	1373-406-0040-0	ARM, SIDE CLUTCH RH Etrier, D.		1	FNo. 100001-106930 FNo. 500001-501750
13- 8a	1373-406-0041-0	ARM, SIDE CLUTCH RH Etrier, D.		1	FNo. 106931- FNo. 501751-
13- 9	1373-406-0050-0	PIN, SIDE CLUTCH ARM Goupille		1	
13-10	V41316-001200	WASHER/M12 Rondelle		1	
13-11	V50015-300220	PIN, SPLIT/3×22 Goupille fendue		1	
13-12	1340-402-0010-0	WIRE, THROTTLE Cable d'accélérateur	1	1	No. 1-7250 FNo. 1-101000
13-12a	1365-402-0010-0	WIRE, THROTTLE Cable d'accélérateur	1	1	No. 7251- FNo. 101001-
13-13	1315-621-0140-0	BAND, WIRE Sangle		2	FNo. 100001-106930
13-13a	1376-402-0030-0	BAND, WIRE/140 Sangle	1	2	FNo. 106931- FNo. 500001-
13-14	1352-404-0040-0	SPRING, CLUTCH Ressort	1	1	
13-15	1364-404-0010-0	LEVER, LOCK Lever	1	1	
13-16	1364-404-0020-0	WIRE, LOCK Cable	1	1	
13-17	1364-404-0030-0	PIN, LOCK Axe	1	1	No. 1-7250 FNo. 1-100839
13-17a	1364-404-0031-0	PIN, LOCK Axe	1	1	No. 7251- FNo. 100840-
13-18	1364-404-0040-0	CASE, SPRING Carter de ressort	1	1	
13-19	1364-404-0050-0	PIN/6×19 Goupille	1	1	
13-20	1326-401-0070-0	PIN, MAIN CLUTCH CAM Goupille	1	1	
13-21	V50015-200140	PIN, SPLIT/2×14 Goupille fendue	2	2	
13-22	3740-162-0050-0	WASHER / 6.5×18×1 Rondelle	2	2	
13-23	1364-404-0060-0	SPRING, PRESS/59 Ressort	1	1	
13-24	V30226-000600	NUT/M6 Ecrou	1	1	
13-25	V20026-060120	BOLT/M6×12 Vis	2	2	
13-26	V40116-000600	WASHER, SP/M6 Rondelle frein	2	2	
13-27	V30026-000600	NUT/M6 Ecrou	2	2	
13-28	1373-401-1000-0	LEVER, MAIN CLUTCH Lever d'embrayage		1	
13-29	1351-401-0020-0	PIN, CLUTCH LEVER Axe d'embrayage		1	
13-30	V30026-000800	NUT/M8 Ecrou		1	
13-31	V40116-000800	WASHER, SP/M8 Rondelle frein		1	
13-32	V41316-000600	WASHER, M6 Rondelle		1	
13-33	1351-401-0030-0	COLLAR/13×17×16 Collier		1	

Ref No. Réf N°.	Parts No. Pièces N°.	Description Désignation	Model & Q'ty Modél & Quant		Remarks Remarques
			KC350	KC350F	
13-34	4106-105-3030-0	KNOB Poignee		1	
13-34a	2101-230-0010-0	KNOB Poignee		1	
13-35	V50015-200150	PIN, SPLIT/2×15 Goupille fendue		1	
13-36	1373-401-0010-0	WIRE, MAIN CLUTCH Cable		1	
13-37	1373-406-2000-0	LEVER, SIDE CLUTCH LH Poignee, G.		1	} FNo. 101351-
13-38	1373-406-2200-0	LEVER, SIDE CLUTCH LH Poignee, G.		1	
13-39	1373-406-2100-0	LEVER, SIDE CLUTCH RH Poignee, D.		1	
13-40	1373-406-2300-0	LEVER, SIDE CLUTCH RH Poignee, D.		1	
13-41	1373-621-2000-0	SWITCH, STOP ASSY Interrupteur	1	1	FNo. 106931- FENo. 500001-
13-42	1364-400-0510-0	LEVER, MAIN CLUTCH ASSY Lever d'embrayage	1		
13-43	1364-401-2000-0	LEVER, MAIN CLUTCH ASSY Lever d'embrayage	1		
13-44	V10015-600230	SCREW/M6×23 Vis	2		
13-45	1364-401-0020-0	WIRE, MAIN CLUTCH Cable d'embrayage	1		

Fig. 13A CONTROL SYSTEM(W-type)

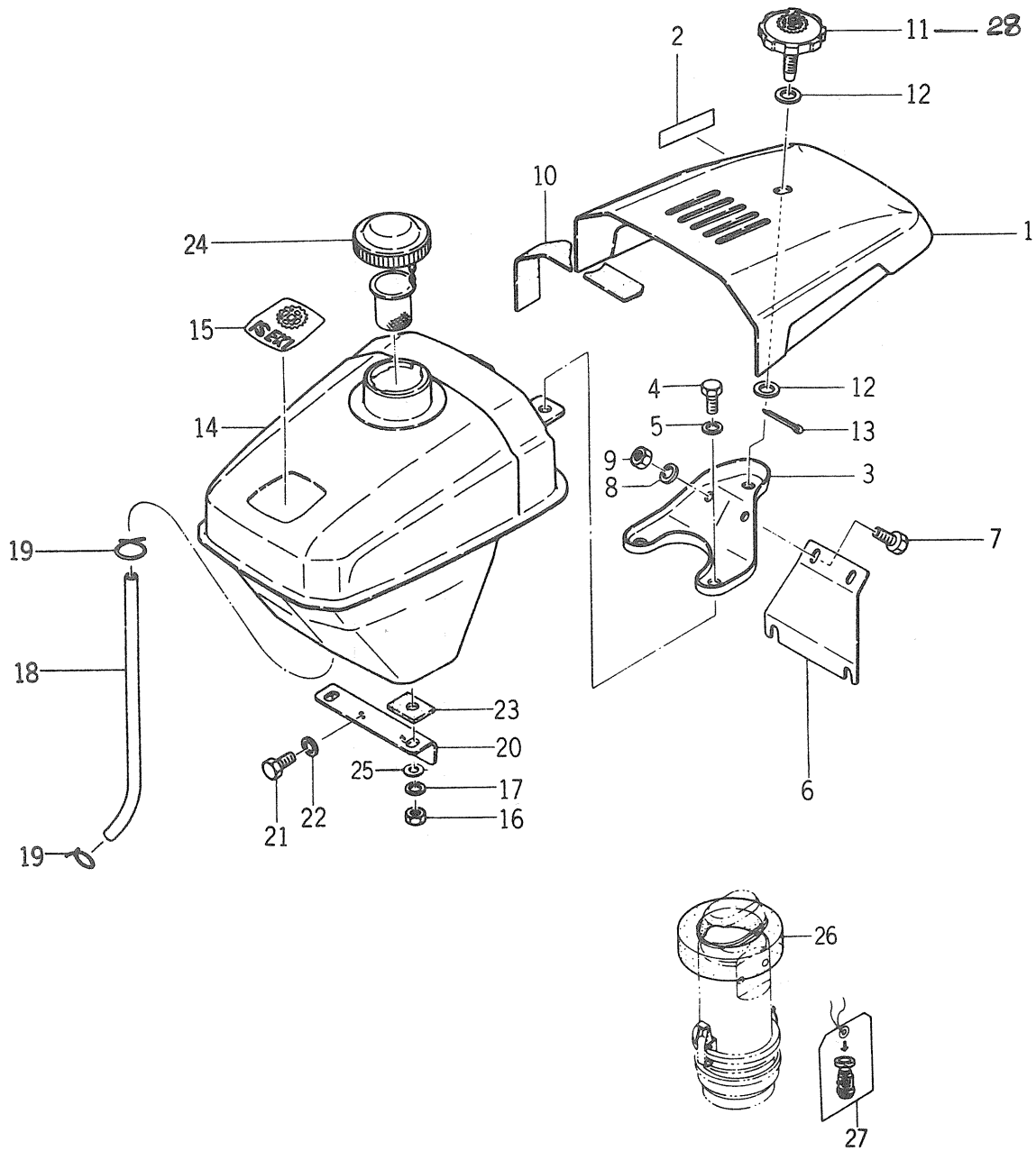
Commandes



Ref No. Réf N°	Parts No. Pièces N°	Description Désignation	Model & Q'ty Modél & Quant		Remarks Remarques
			KC350	KC350F	
13A- 1	1373-406-2000-0	LEVER, CLUTCH LH Poignee G.		1	interchangeable
13A- 2	1373-406-2100-0	LEVER, CLUTCH RH Poignee D.		1	
13A- 1-1	1373-406-2200-0	LEVER, CLUTCH RH Poignee G.		1	
13A- 2-1	1373-406-2300-0	LEVER, CLUTCH RH Poignee D.		1	
13A- 3	1373-406-0010-0	WIRE, SIDE CLUTCH Cable de clabotage		2	
13A- 4	1373-406-0020-0	SPRING, PRESS./100 Ressort		2	
13A- 5	1373-406-0031-0	ARM, SIDE CLUTCH LH Etrier G.		1	
13A- 6	1373-406-0041-0	ARM, SIDE CLUTCH RH Etrier D.		1	
13A- 7	1373-406-0050-0	PIN, CLUTCH ARM RH Goupille		1	
13A- 8	V413-160-0120-0	WASHER,/M12 Rondelle		1	
13A- 9	V500-153-0022-0	PIN, SPLIT/3×22 Goupille fendue		1	
13A-10	1365-402-0010-0	WIRE, THROTTLE Cable d'accelerateur	1	1	
13A-11	1376-402-0030-0	BAND, WIRE/140 Sangle	2	2	
13A-12	1380-401-0030-0	SPRING, CLUTCH Ressort	2	2	
13A-13	1364-404-0010-0	LEVER, LOCK Lever	1	1	
13A-14	1364-404-0020-0	WIRE, LOCK Cable	1	1	
13A-15	1364-404-0031-0	PIN, LOCK Axe	1	1	
13A-16	1364-404-0040-0	CASE, SPRING Carter de ressort	1	1	
13A-17	1364-404-0050-0	PIN, HEADED/6×19 Goupille	1	1	
13A-18	1326-401-0070-0	PIN, HEADED Goupille	1	1	
13A-19	V500-162-0014-0	PIN, SPLIT/2×14 Goupille fendue	2	2	
13A-20	3740-162-0050-0	WASHER/6.5×18×1 Rondelle	2	2	
13A-21	1364-404-0060-0	SPRING, PRESS/59 Ressort	1	1	
13A-22	V302-260-0060-0	NUT/M6 Ecrou	1	1	
13A-23	V200-260-6012-0	BOLT/M6×12 Vis	2	2	
13A-24	V401-160-0060-0	WASHER, SP/M6 Rondelle frein	2	2	
13A-25	V300-260-0060-0	NUT/M6 Ecrou	2	2	
13A-26	1380-401-2000-0	LEVER, CLUTCH Lever d'embrayage	1	1	
13A-27	3517-205-0070-0	WASHER Rondelle	2	2	
13A-28	3517-501-0110-0	SPRING, CLUTCH Ressort	1	1	
13A-29	1380-401-2101-0	ARM, CLUTCH RH Etrier D.	1	1	
13A-30	1380-401-2301-0	ARM, CLUTCH LH Etrier D.	1	1	
13A-31	1380-401-0010-0	PIN/75 Goupille	1	1	
13A-32	V500-153-0018-0	PIN, SPLIT/3×18 Goupille fendue	1	1	
13A-33	V413-160-0120-0	WASHER/M12 Rondelle	1	1	
13A-34	4106-105-3030-0	KNOB Poignee	1	1	
13A-35	1380-401-0021-0	WIRE, MAIN CLUTCH Cable	2	2	
13A-36	1375-621-2000-0	SWITCH, STOP ASSY Interrupteur		1	

Fig. 14

BONNET and FUEL TANK(4cycle type)
Reservoir et capot

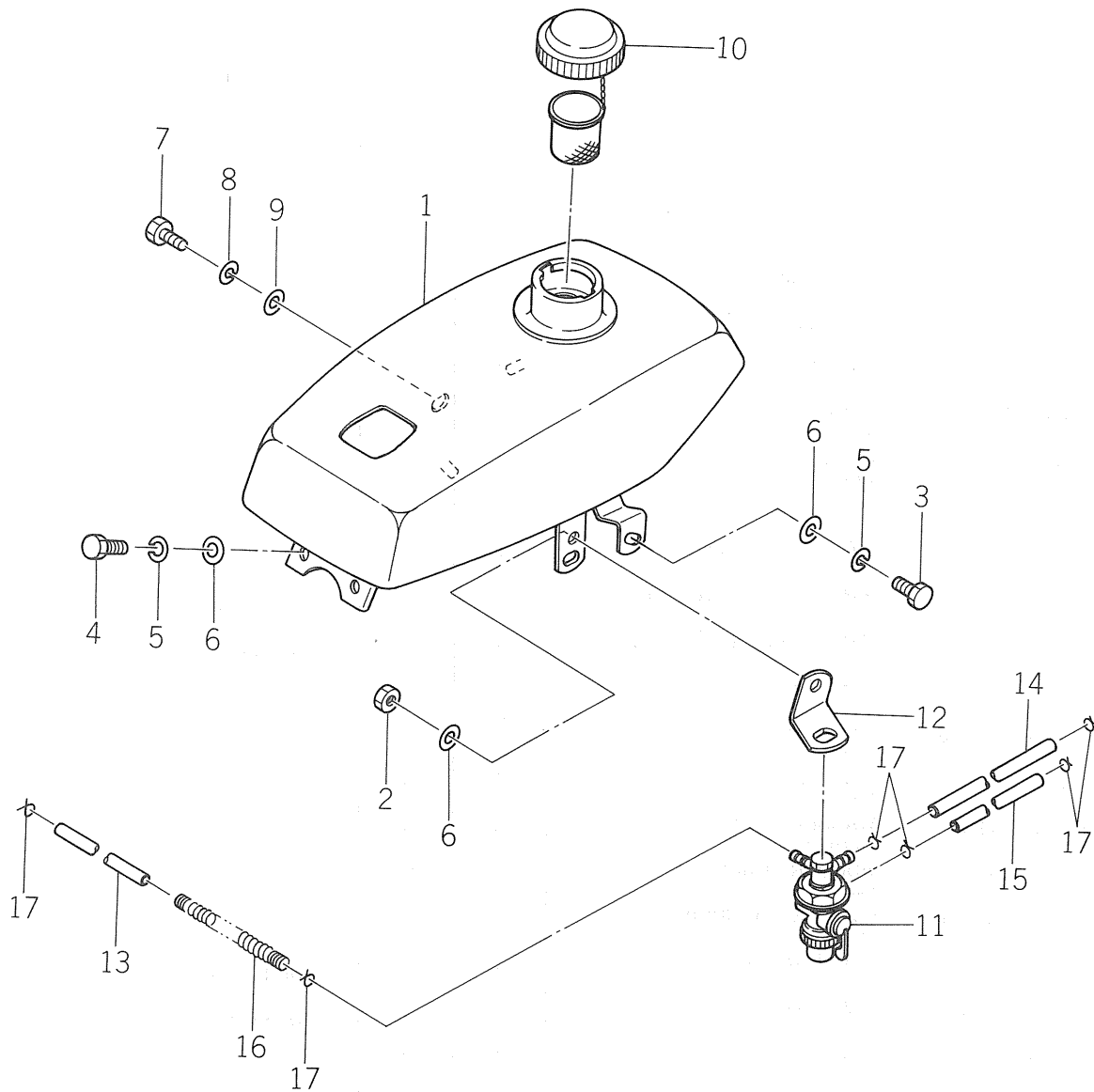


Ref No. Réf N°.	Parts No. Pièces N°.	Description Désignation	Model & Q'ty Modél & Quant		Remarks Remarques
			KC350	KC350F	
14- 1	1349-601-1000-0	BONNET Capot	1	1	No. 1-7850 FNo. 1-102250
14- 1a	1349-601-1001-0	BONNET Capot	1	1	No. 7851- FNo. 102251-
14- 2	1349-952-0010-0	MARK, CHOKE Etiquette	1	1	No. 6751-
14- 3	1349-601-2000-0	BRACKET, BONNET Support	1	1	FNo. 100001-
14- 4	V20126-080140	BOLT/M8×14 Vis	2	2	
14- 5	V40126-000800	WASHER, SP/M8 Rondelle frein	2	2	
14- 6	1349-601-0010-0	STAY, BRACKET Appui	1	1	
14- 7	V20026-060100	BOLT/M6×10 Vis	2	2	
14- 8	V40116-000600	WASHER, SP/M6 Rondelle frein	2	2	
14- 9	V30026-000600	NUT/M6 Ecrou	2	2	
14-10	1349-601-0020-0	RUBBER, COVER Cale	1	1	
14-11	1340-601-0040-0	KNOB, SET Bouton de capot A.M.	1	1	
14-12	V41116-001000	WASHER/M10 Rondelle	2	2	
14-13	V50015-300150	PIN, SPLIT/3×15 Goupille fendue	1	1	
14-14	1349-606-1000-0	TANK, FUEL Reservoir	1	1	
14-15	1329-902-0030-0	MARK, MASCOT Etiquette	1	1	
14-16	V30026-000800	NUT/M8 Ecrou	2	2	
14-17	V40126-000800	WASHER, SP/M8 Rondelle frein	2	2	
14-18	V73507-101170	PIPE/VINYL 7×10×117 Conduit	1		No. 1-6750
14-18a	1349-606-0030-0	PIPE, RUBBER 7×10×113 Conduit	1	1	No. 6751-
14-19		WIRE/0.9×100 Fil	2	2	
14-20	1349-606-0010-0	STAY, TANK Calandre	1	1	
14-21	V20126-060120	BOLT/M6×12 Vis	2	2	
14-22	V40126-000600	WASHER, SP/M6 Rondelle frein	2	2	
14-23	1349-606-0020-0	RUBBER, TANK Cale	2	2	
14-23a	1423-616-0040-0	CUSHION / RUBBER Cale	2	2	
14-24	1317-606-2000-0	CAP, FUEL TANK Bouchon de reservoir	1		No. 1-6750
14-24a	1352-600-0531-0	CAP, TANK Bouchon de reservoir	1	1	No. 6751-
14-24b	1352-606-2000-0	CAP, TANK Bouchon de reservoir	1	1	
14-25	V41316-000800	WASHER/M8 Rondelle	2	2	
14-26	1364-121-0010-0	FILTER, AIR Filtre a air	1		
14-27	1364-902-0020-0	TAG, AIR FILTER Etiquette	1		No. 1-
14-28	1352-601-0020-0	Bouton de capot N.M.			

Fig. 14A

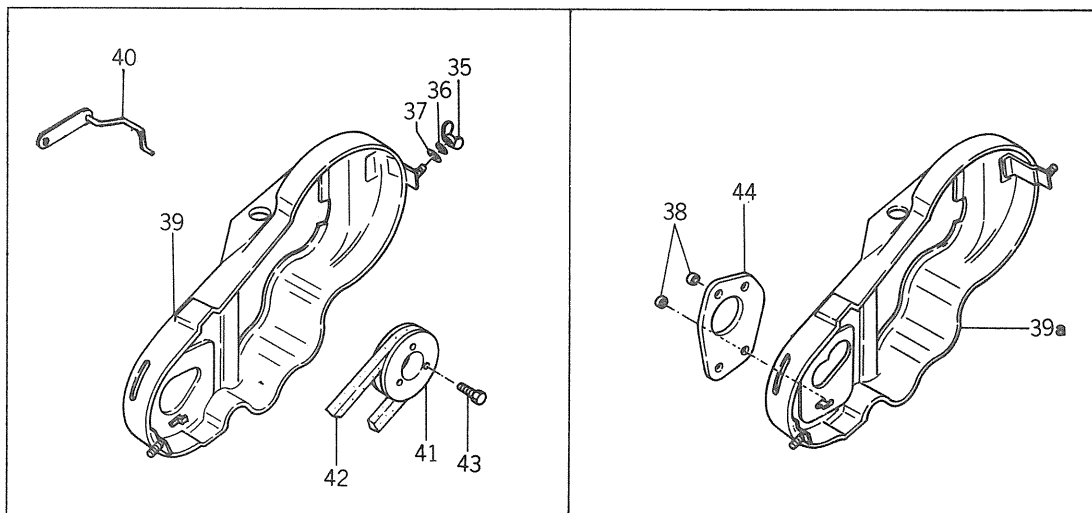
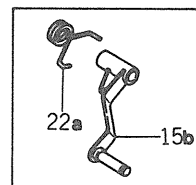
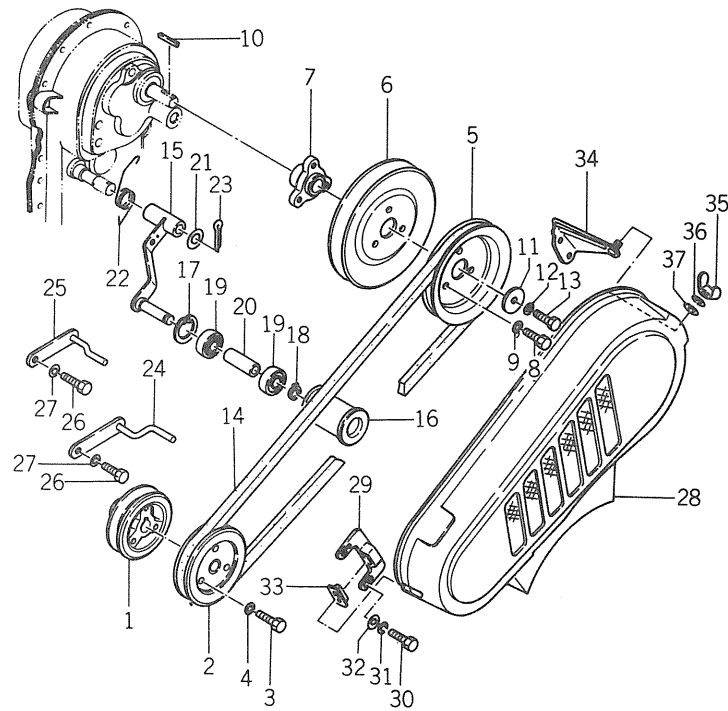
BONNET and FUEL TANK(2cycle type)

Reservoir et capot



Ref No. Réf N°.	Parts No. Pièces N°.	Description Désignation	Model & Q'ty Modél & Quant		Remarks Remarques
			KC350	KC350F	
14A-1	1373-606-2000-0	TANK, FUEL Reservoir		1	
14A-2	V300-260-0080-0	NUT/M8 Ecrow Ecrow		1	
14A-3	V201-260-8020-0	BOLT/M8×20 Vis		2	
14A-4	V201-260-8016-0	BOLT/M8×16 Vis		2	
14A-5	V401-160-0080-0	WASHER, SP/M8 Rondelle frein		4	
14A-6	V413-160-0080-0	WASHER/M8 Rondelle		5	
14A-7	V201-261-0016-0	BOLT/M10×16 Vis		1	
14A-8	V401-160-0100-0	WASHER, SP/M10 Rondelle frein		1	
14A-9	V413-160-0100-0	WASHER/M10 Rondelle		1	
14A-10	1352-606-2000-0	CAP, TANK ASSY Bouchon de reservoir		1	
14A-11	1373-606-2100-0	STRAINER, FUEL ASSY Decanteur		1	
14A-12	1373-606-0010-0	STAY, STRAINER Appu i		1	
14A-13	1373-606-0020-0	PIPE, FUEL A PIPE Conduit		1	
14A-14	1373-606-0030-0	PIPE, FUEL B Conduit		1	
14A-15	1373-606-0040-0	PIPE, FUEL C Conduit		1	
14A-16	1317-606-0051-0	SPRING Ressort		1	
14A-17		WIRE/1.0×90 Fil		6	

Fig. 15. BELT DRIVE(4cycle type)
 Courroie intermediaire



Ref No. Réf N°.	Parts No. Pièces N°.	Description Désignation	Model & Q'ty Modél & Quant		Remarks Remarques
			KC350	KC350F	
15- 1	1364-201-0010-0	PULLEY, ENGINE/77 Poulie motrice	1		No. 1-6750
15- 1a	1364-201-0011-0	PULLEY, ENGINE/77 Poulie motrice	1	1	No. 6751-
15- 2	1364-201-0020-0	PULLEY, ENGINE/106 Poulie motrice	1		No. 1-6750
15- 2a	1364-201-0021-0	PULLEY, ENGINE/106 Poulie motrice	1	1	No. 6751-
15- 3	V20126-080120	BOLT/M8×12 Vis	3		No. 1-6750
15- 3a	V20126-080160	BOLT/M8×16 Vis	3	3	No. 6751-
15- 4	V40116-000800	WASHER, SP/M8 Rondelle frein	3	3	
15- 5	1364-201-0030-0	PULLEY, V/124 Poulie menee	1	1	
15- 6	1364-201-0040-0	PULLEY, V/150 Poulie menee	1	1	
15- 7	1364-201-0050-0	BOSS, PULLEY Moyeu de poulie	1	1	
15- 8	V20126-080160	BOLT/M8×16 Vis	3	3	
15- 9	V40116-000800	WASHER, SP/M8 Rondelle frein	3	3	
15-10	1329-201-0030-0	KEY, MAIN SHAFT Clarette	1	1	
15-11	1324-205-0020-0	WASHER, FOLLOWER Rondelle	1	1	
15-12	V40116-000800	WASHER, SP/M8 Rondelle frein	1	1	
15-13	V20126-080160	BOLT/M8×16 Vis	1		No. 1-6750
15-13a	V20126-080200	BOLT/M8×20 Vis	1	1	No. 6751-
15-14	V81720-003900	BELT, V/SB39 Courroie de reas	1	1	
15-15	1364-202-1000-0	ARM, TENSION Bras de tension	1		No. 1-6750
15-15a	1364-202-1001-0	ARM, TENSION Bras de tension	1	1	No. 6751- FNo. 100001-106930
15-15b	1373-202-2000-0	ARM, TENSION Bras de tension		1	FNo. 106931- FNo. 500001-
15-16	1329-202-0011-0	PULLEY, TENSION Galet tendeur	1	1	
15-17	V70514-003200	RING, SNAP/C32 Collet d'axe	1	1	
15-18	V70414-001200	RING, SNAP/C12 Collet d'axe	1	1	
15-19	V60014-062010	BEARING, RB/6201RS Roulement	2	2	
15-20	1329-202-0030-0	COLLAR, TENSION Collier	1	1	
15-21	3750-271-0050-0	COLLAR Collier	1	1	
15-22	1364-202-0010-0	SPRING, TORQUE/28 Ressort	1	1	FNo. 100001-106930
15-22a	1373-202-0010-0	SPRING, TORQUE/37 Ressort		1	FNo. 106931- FNo. 500001-
15-23	V50015-300250	PIN, SPLIT/3×25 Goupille fendue	1	1	
15-24	1364-204-1000-0	STOPPER, BELT A Arret de courroie	1	1	No. 1-7850 FNo. 1-102250
15-24a	1364-205-2000-0	STOPPER, BELT A Arret de courroie	1	1	No. 7851-9410 FNo. 102251-
15-24b	1364-206-2000-0	STOPPER, BELT A Arret de courroie	1	1	No. 9411- FNo. 508251-
15-25	1364-204-2000-0	STOPPER, BELT B Arret de courroie	1	1	No. 1-7850 FNo. 1-102250
15-25a	1364-205-2100-0	STOPPER, BELT B Arret de courroie	1	1	No. 7851-9410 FNo. 102251-508250
15-25b	1364-206-2100-0	STOPPER, BELT B Arret de courroie	1	1	No. 9411- FNo. 508251-
15-26	V20216-080120	BOLT/M8×12 Vis	2	2	No. 1-7850 FNo. 1-102250
15-26a	V20126-080200	BOLT/M8×20 Vis	2	2	No. 7851- FNo. 102251-