

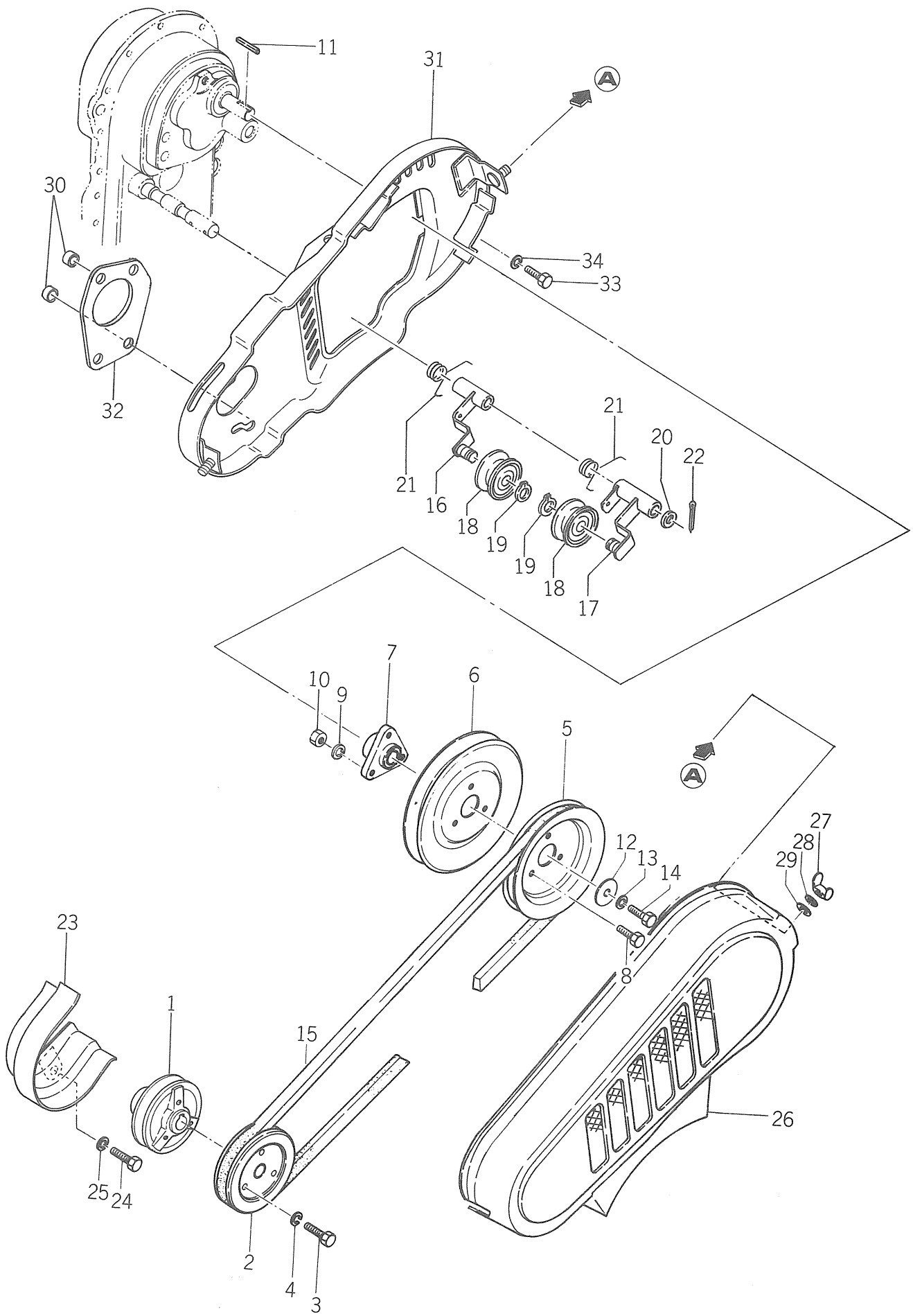
Ref No. Réf N°.	Parts No. Pièces N°.	Description Désignation	Model & Q'ty Modél & Quant		Remarks Remarques
			KC350	KC350F	
15-27	V40126-000800	WASHER, SP/M8 Rondelle frein	2	2	No. 1-7850 FNo. 1-102250
15-27a	V40116-000800	WASHER, SP/M8 Rondelle frein	2	2	No. 7851- FNo. 102251-
15-28	1364-611-1000-0	COVER, BELT Carter de courroies	1	1	No. 1-7850 FNo. 1-102250
15-28a	1364-612-2000-0	COVER, BELT A Carter de courroies	1	1	No. 7851- FNo. 102251-
15-29	1364-611-2000-0	COVER, BRACKET Support	1	1	
15-30	V20216-080160	BOLT/M8 × 16 Vis	2	2	
15-31	V40126-000800	WASHER, SP/M8 Rondelle frein	2	2	
15-32	V41316-000800	WASHER/M8 Rondelle	2	2	No. 1-7850 FNo. 1-102250
15-33	1329-611-0010-0	RUBBER, BELT COVER Cale	1	1	
15-34	1364-611-3000-0	STAY, COVER Caralier	1	1	
15-35	V37016-000800	NUT, WING/M8 Ecrrou a oreilles	2	2	
15-36	V40116-000800	WASHER, SP/M8 Rondelle frein	2	2	
15-37	V41316-000800	WASHER/M8 Rondelle	1	1	No. 1-6750
15-37a	1352-616-0020-0	WASHER Rondelle	2	2	No. 6751- FNo. 100001-
15-38	1364-205-0010-0	COLLAR/9 × 30 × 5 Collier	2	2	
15-39	1364-612-2100-0	COVER, BELT B Carter de courroies	1	1	No. 7851-9410 FNo. 102251-508250
15-39a	1364-613-2000-0	COVER, BELT B Carter de courroies	1	1	No. 9411- FNo. 508251-
15-40	1364-205-2200-0	STOPPER, BELT C Arret de courroie	1	1	
15-41	1364-201-0080-0	PULLEY, V/84 Poulie menee	1	1	★
15-42	V81720-003600	BELT, V/SB36 Courroie de reas	1	1	★
15-43	V20126-080350	BOLT/M8 × 35 Vis	3	3	★
15-44	1364-613-0010-0	SPACER, COVER Entretoise	1	1	

FORM 100 (REV. 1-2003)

SERVICE MEMO

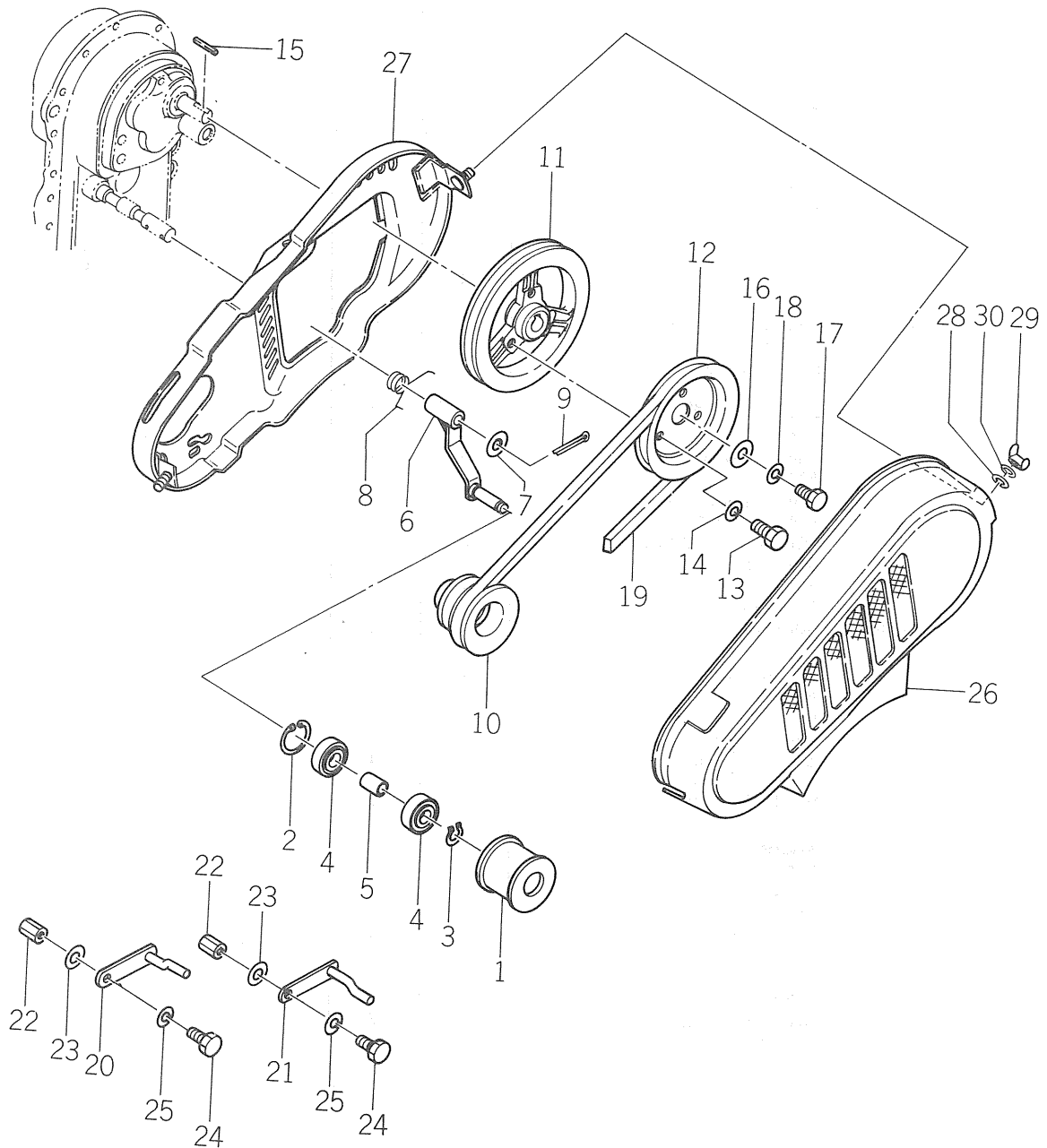
A series of horizontal dashed lines for writing.

Fig. 15A BELT DRIVE(W-type)
 Courroie intermediaire



Ref No. Réf N°.	Parts No. Pièces N°.	Description Désignation	Model & Q'ty Modél & Quant		Remarks Remarques
			KC350	KC350F	
15A- 1	1373-261-0010-0	PULLEY, ENGINE/77 Poulie motrice	1	1	
15A- 2	1364-201-0021-0	PULLEY, ENGINE/107 Poulie motrice	1	1	
15A- 3	V201-260-8016-0	BOLT/M8×16 Vis	3	3	
15A- 4	V401-160-0080-0	WASHER, SP/M8 Rondelle frein	3	3	
15A- 5	1364-201-0030-0	PULLEY, V/124 Poulie menee	1	1	
15A- 6	1364-201-0040-0	PULLEY, V/150 Poulie menee	1	1	
15A- 7	1373-261-0020-0	BOSS, PULLEY Mayeu de poulie	1	1	
15A- 8	V201-260-8020-0	BOLT/M8×20 Vis	3	3	
15A- 9	V401-160-0080-0	WASHER, SP/M8 Rondelle frein	3	3	
15A-10	V300-260-0080-0	NUT/M8 Erou	3	3	
15A-11	1329-201-0030-0	KEY Clavette	1	1	
15A-12	1324-205-0020-0	WASHER Rondelle	1	1	
15A-13	V401-160-0080-0	WASHER, SP/M8 Rondelle frein	1	1	
15A-14	V201-260-8025-0	BOLT/M8×25 Vis	1	1	
15A-15	V817-200-0390-0	BELT, V/SB 39 Courroie de reas	2	2	
15A-16	1373-262-2000-0	ARM, TENSION A Bras de tension	1	1	
15A-17	1373-262-2100-0	ARM, TENSION B Bras de tension	1	1	
15A-18	1352-202-3000-0	PULLEY, TENSION Galet tendeur	2	2	
15A-19	V704-140-0150-0	RING, SNAP/C 15 Collet d'axe	2	2	
15A-20	3750-271-0050-0	COLLAR Collier	1	1	
15A-21	1380-202-0010-0	SPRING, TORQUE/27 Ressort	2	2	
15A-22	V500-153-0025-0	PIN, SPLIT/3×25 Goupille fendue	1	1	
15A-23	1373-263-2000-0	STOPPER, BELT Arret de courroie	1	1	
15A-24	V201-260-8025-0	BOLT/M8×25 Vis	2	2	
15A-25	V401-160-0080-0	WASHER, SP/M8 Rondelle frein	2	2	
15A-26	1373-651-2000-0	COVER, BELT A Carter de courroies	1	1	
15A-27	V370-160-0080-0	NUT, WING/M8 Erou a oreilles	2	2	
15A-28	V401-160-0080-0	WASHER, SP/M8 Rondelle frein	2	2	
15A-29	1352-616-0020-0	WASHER, CONE Rondelle	2	2	
15A-30	1364-205-0010-0	COLLAR/9×30×5 Collier	2	2	
15A-31	1373-651-2100-0	COVER, BELT B Carter de courroies	1	1	
15A-32	1364-613-0010-0	SPACER, COVER Entretoise	1	1	
15A-33	V201-260-8035-0	BOLT/M8×35 Vis	1	1	
15A-34	V401-160-0080-0	WASHER, SP/M8 Rondelle frein	1	1	

Fig. 15B BELT DRIVE(2cycle type)
Courroie intermediaire

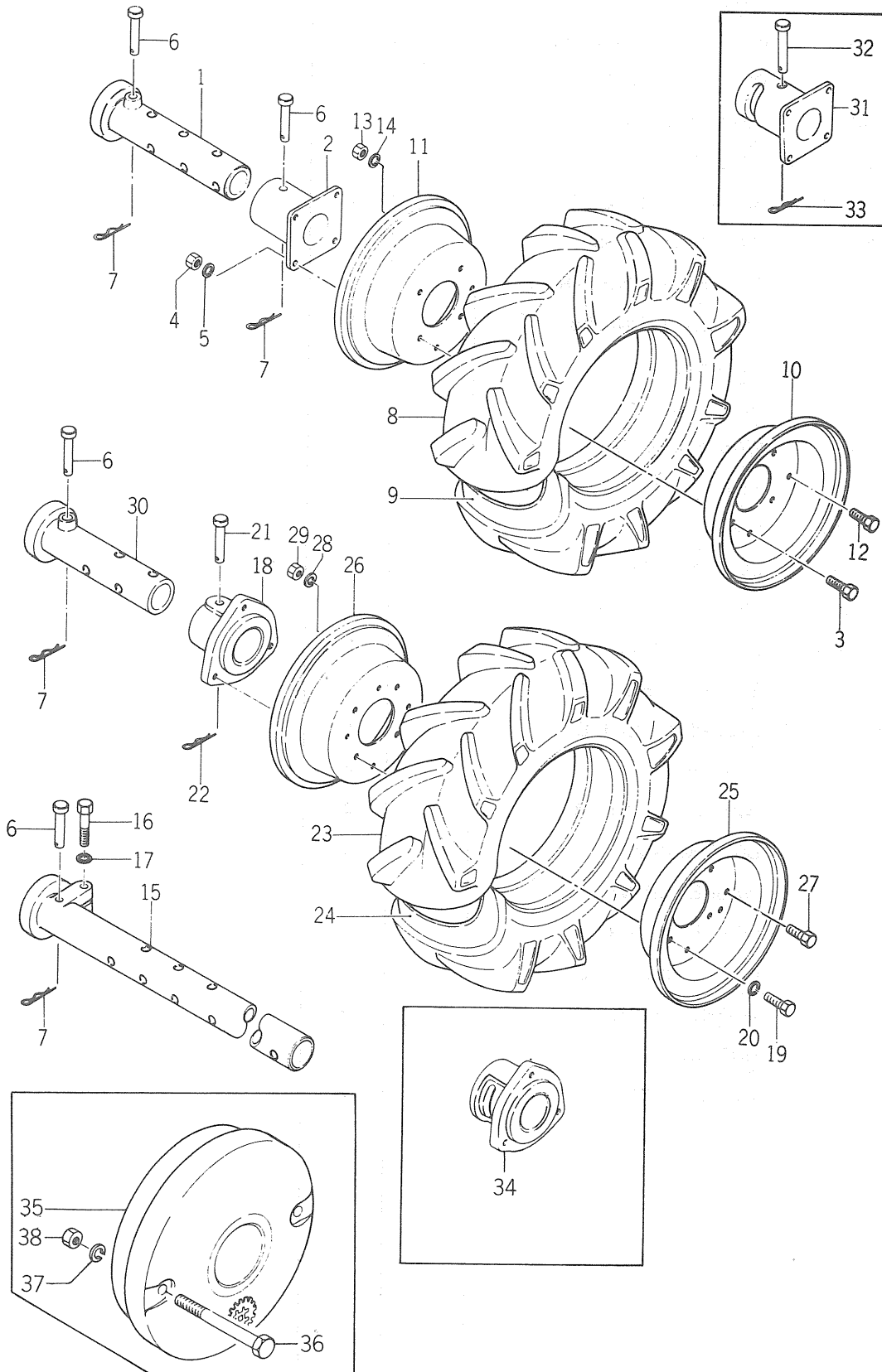


Ref No. Réf N°.	Parts No. Pièces N°.	Description Désignation	Model & Q'ty Modél & Quant		Remarks Remarques
			KC350	KC350F	
15B-1	1374-202-0010-0	PULLEY, TENSION Galet tendeur		1	
15B-2	V705-140-0320-0	RING, SNAP/C 32 Collet d'axe		1	
15B-3	V704-140-0120-0	RING, SNAP/C 12 Collet d'axe		1	
15B-4	V600-140-6201-0	BEARING, RB/6201RS Roulement		2	
15B-5	1329-202-0030-0	COLLAR, TENSION Collier		1	
15B-6	1375-202-2000-0	ARM, TENSION Bras de tension		1	
15B-7	3750-271-0050-0	COLLAR Collier		1	
15B-8	1373-202-0010-0	SPRING, TORQUE/37 Ressort		1	
15B-9	V500-153-0025-0	PIN, SPLIT/3×25 Goupille fendue		1	
15B-10	1373-203-0010-0	PULLEY, ENGINE/48-67 Poulie motrice		1	
15B-11	1373-203-0020-0	PULLEY, MAIN/158 Poulie menee		1	
15B-12	1352-201-2020-0	PULLEY, V/141 Poulie menee		1	
15B-13	V201-260-8016-0	BOLT/M8×16 Vis		3	
15B-14	V401-160-0080-0	WASHER, SP/M8 Rondelle frein		3	
15B-15	1329-201-0030-0	KEY Clavette		1	
15B-16	1324-205-0020-0	WASHER Rondelle		1	
15B-17	V201-260-8020-0	BOLT/M8×20 Vis		1	
15B-18	V401-160-0080-0	WASHER, SP/M8 Rondelle frein		1	
15B-19	V817-200-0390-0	BELT, V/SB39 Courroie de reas		1	
15B-20	1373-204-2000-0	STOPPER, BELT A Arret de courroie		1	
15B-21	1373-204-2100-0	STOPPER, BELT B Arret de courroie		1	
15B-22	1373-204-0010-0	NUT/M6 Ecrou		2	
15B-23	1337-701-0040-0	WASHER/7×21×3 Rondelle		2	
15B-24	V200-260-6020-0	BOLT/M6×20 Vis		2	
15B-25	V401-160-0060-0	WASHER, SP/M6 Rondelle frein		2	
15B-26	1364-612-2000-0	COVER, BELT A Carter de courroies		1	
15B-27	1373-652-2000-0	COVER, BELT A B Carter de courroies		1	
15B-28	1352-616-0020-0	WASHER, CONE Rondelle		2	
15B-29	V371-160-0080-0	NUT, WING/M8 Ecrou a oreilles		2	
15B-30	V401-160-0080-0	WASHER, SP/M8 Rondelle frein		2	

Fig. 16

WHEEL and WHEEL PIPE

Roues



Ref No. Réf N°.	Parts No. Pièces N°.	Description Désignation	Model & Q'ty Modél & Quant		Remarks Remarques
			KC350	KC350F	
16- 1	1329-241-4000-0	PIPE, WHEEL/4 Tube rallonge	2	2	★
16- 2	1329-241-6000-0	FLANGE, WHEEL BOSS Boudin	2	2	★
16- 3	V20126-080200	BOLT/M8×20 Vis	8	8	★
16- 4	V30026-000800	NUT/M8 Erou	8	8	★
16- 5	V40116-000800	WASHER, SP/M8 Rondelle frein	8	8	★
16- 6	1310-241-0030-0	PIN, HEADED A Goupille	4	4	
16- 7	1305-241-0010-0	PIN, HAIR Attache beta	4	4	
16- 0-1	1329-200-9030-0	TIRE, LH ASSY/400-7 Roue, G.	1	1	★
16- 0-2	1329-200-9040-0	TIRE, RH ASSY/400-7 Roue, D.	1	1	★
16- 8	V88202-400070	·TIRE/400-7 Pneu	2	2	★
16- 9	V88300-400070	·TUBE/400-7 Chambre a air	2	2	★
16- 0-3	1329-200-9020-0	·DRUM, WHEEL ASSY Jante ensemble	2	2	★
16-10	1329-241-0020-1	··DRUM, WHEEL Flasque	2	2	★
16-11	1329-241-0030-1	··DRUM, WHEEL Flasque	2	2	★
16-12	V20126-080160	··BOLT/M8×16 Vis	8	8	★
16-13	V30026-000800	··NUT/M8 Erou	8	8	★
16-14	V40116-000800	··WASHER, SP/M8 Rondelle frein	8	8	★
16-15	1331-253-3000-0	PIPE, WHEEL/430 Tube rallonge	2	2	★
16-16	V20126-120500	BOLT/M12×50 Vis	2	2	★ No. 6751-
16-17	V40116-001200	WASHER, SP/M12 Rondelle frein	2	2	★ FNo. 100001-
16- 0-4	1325-200-9010-0	BOSS, WHEEL ASSY Moyeu ensemble	6	2	★
16-18	1325-241-0010-1	·BOSS, WHEEL Moyeu	2	2	★
16-19	V20126-120200	·BOLT/M12×20 Vis	6	6	★
16-20	V40116-001200	·WASHER, SP/M12 Rondelle frein	6	6	★
16-21	1305-202-0060-0	PIN, HEADED Goupille	2	2	★
16-22	1305-241-0010-0	PIN, HAIR Attache beta	2	2	★
16- 0-5	1325-200-9030-0	TIRE, RH ASSY/400-9 Roue G.	1	1	★
16- 0-6	1325-200-9040-0	TIRE, LH ASSY/400-9 Roue D.	1	1	★
16-23	V88202-400090	·TIRE/400-9 Pneu	2	2	★
16-24	V88300-400090	·TUBE/400-9 Chambre a air	2	2	★
16- 0-7	1325-200-9020-0	·DRUM, WHEEL ASSY Jante ensemble	2	2	★
16-25	1325-241-0020-1	··DRUM, WHEEL Flasque	2	2	★
16-26	1325-241-0030-1	··DRUM, WHEEL Flasque	2	2	★
16-27	V20126-100160	··BOLT/M10×16 Vis	12	12	★
16-28	V40116-001000	··WASHER, SP/M10 Rondelle frein	12	12	★
16-29	V30026-001000	··NUT/M10 Erou	12	12	★
16-30	1364-241-1000-0	PIPE, WHEEL Tube rallonge	2	2	★
16-31	1364-241-4000-0	BOSS, PIPE WHEEL B Moyeu	2	2	★

Ref No. Réf N°.	Parts No. Pièces N°.	Description Désignation	Model & Q'ty Modél & Quant		Remarks Remarques
			KC350	KC350F	
16-32	1305-202-0060-0	PIN, HEADED Goupille	2	2	} ★ No. 6751- ★ FNo. 100001-
16-33	1305-241-0010-0	PIN, HAIR Attache beta	2	2	
16-34	1331-253-0010-0	BOSS, WHEEL Moyeu	2	2	★
16-35	1329-931-0020-0	WEIGHT, WHEEL Masse pour roue	2	2	★
16-36	V20126-100950	BOLT/M10×95 Vis	4	4	★
16-37	V40126-001000	WASHER, SP/M10 Rondelle frein	4	4	★
16-38	V30026-001000	NUT/M10 Erou	4	4	★

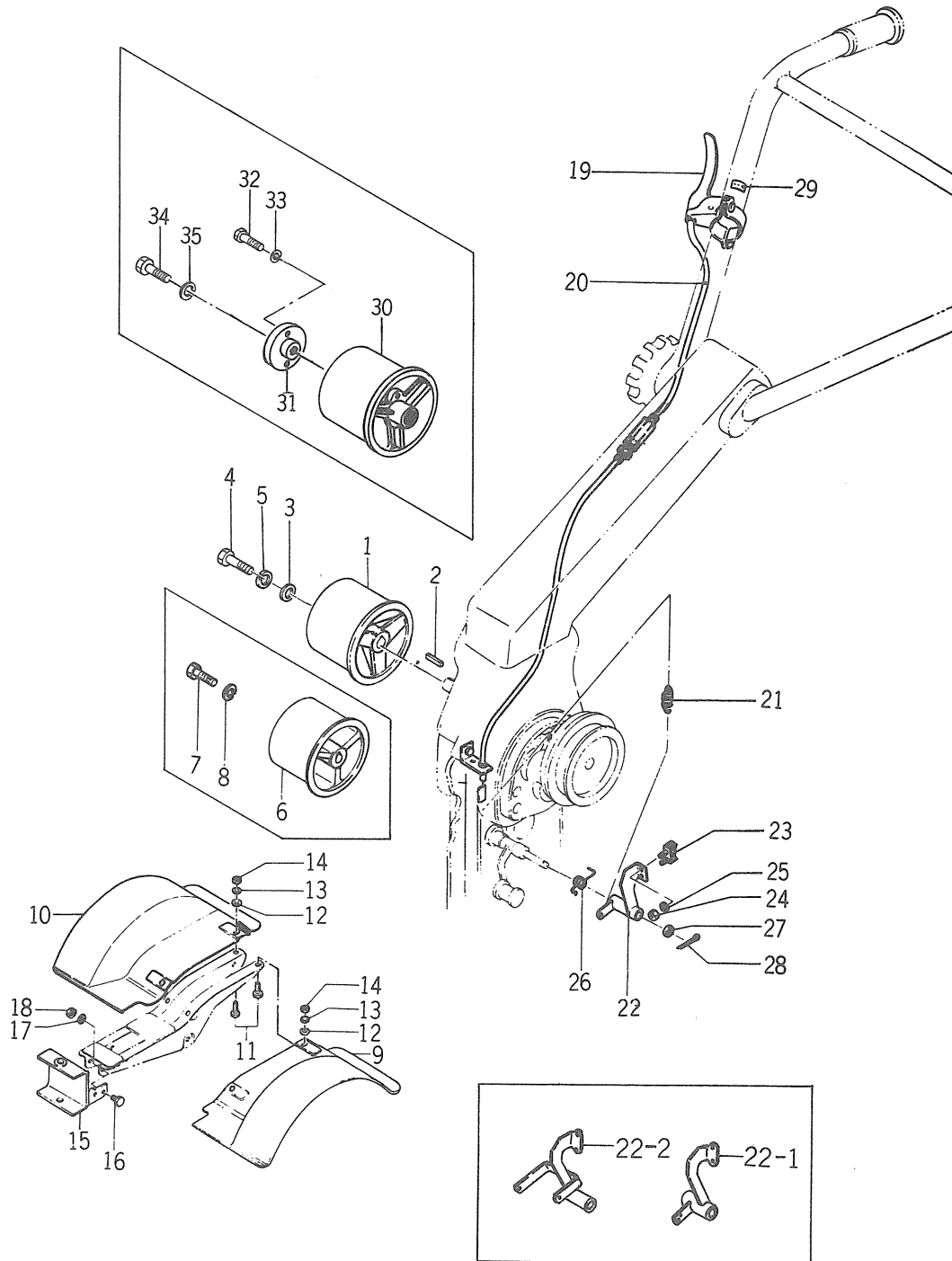
SERVICE MEMO

Lined area for writing the service memo.

Fig. 17

PULLEY, SCRATCH FENDER, FRONT HITCH and PARKING BRAKE

Poulie, garde-boue, attelage et frein



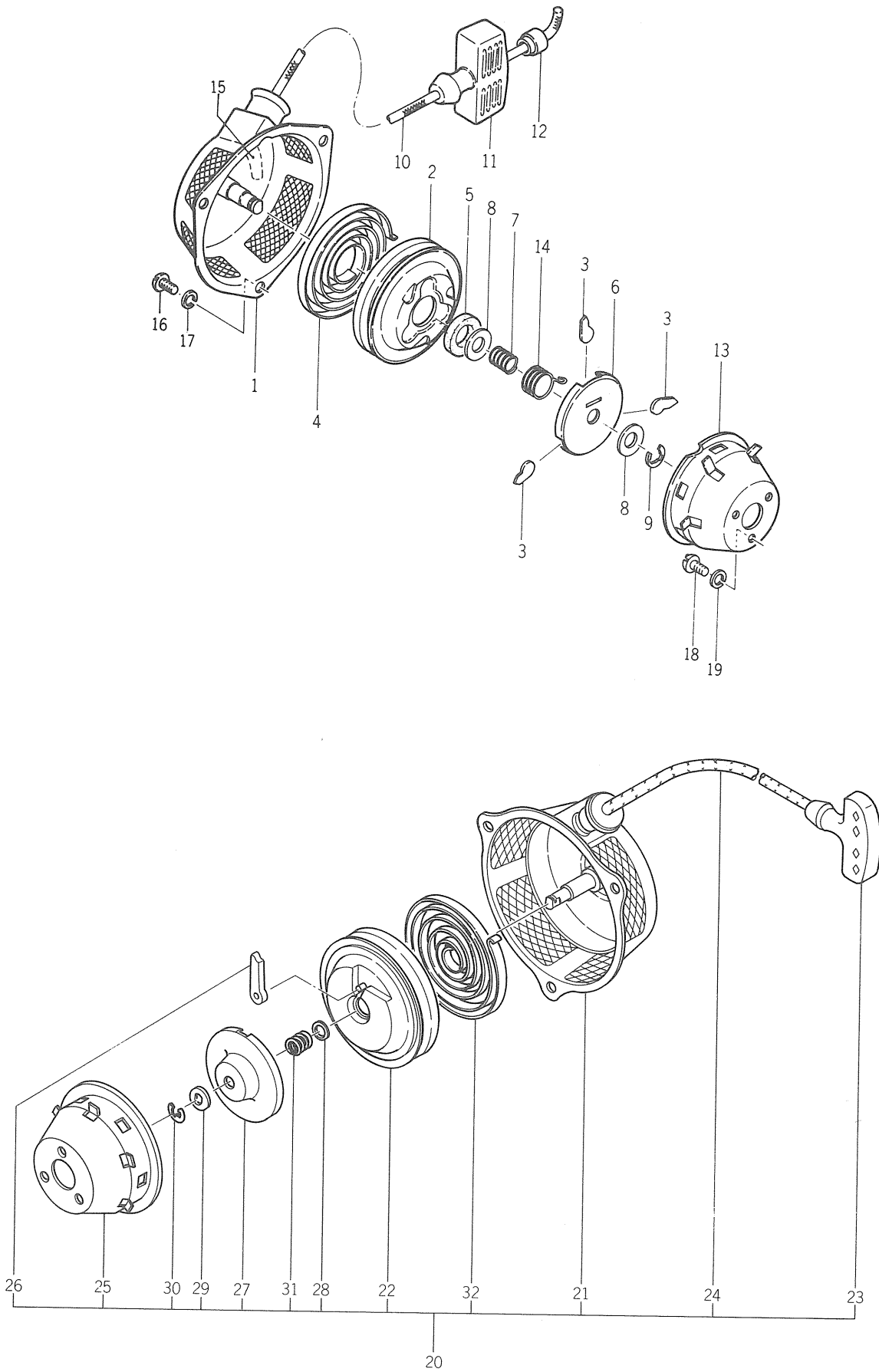
Ref No. Réf N°.	Parts No. Pièces N°.	Description Désignation	Model & Q'ty Modél & Quant		Remarks Remarques
			KC350	KC350F	
17- 1	1364-917-0011-0	PULLEY/100 Poulie	1	1	
17- 2	1329-201-0030-0	KEY, MAIN SHAFT Clavette	1	1	
17- 3	1324-205-0020-0	WASHER, FOLLOWER Rondelle	1	1	
17- 4	V201-260-8020-0	BOLT/M8×20 Vis	1	1	
17- 5	V401-260-0080-0	WASHER, SP/M8 Rondelle frein	1	1	
17- 6	1364-917-0020-0	PULLEY/90 Poulie	1		} No. 1-6750 For engine
17- 7	V201-260-8035-0	BOLT/M8×35 Vis	3		
17- 8	V401-260-0080-0	WASHER, SP/M8 Rondelle frein	3		
17- 0-1	1364-061-2000-0	FENDER, PUDDLE ASSY Garde-boue	1	1	★
17- 9	1364-616-1000-0	·FENDER, PUDDLE LH Garde-boue, G.	1	1	★
17-10	1364-616-2000-0	·FENDER, PUDDLE RH Garde-boue, D.	1	1	★
17-11	V201-260-8016-0	·BOLT/M8×16 Vis	4	4	★
17-12	V413-260-0080-0	·WASHER/M8 Rondelle	4	4	★
17-13	V401-260-0080-0	·WASHER, SP/M8 Rondelle frein	4	4	★
17-14	V300-260-0080-0	·NUT/M8 Erou	4	4	★
17-15	1364-111-1000-0	HITCH, F. Attelage	1		★
17-15-1	1373-111-2100-0	HITCH, F. Attelage		1	★
17-16	V201-260-8020-0	BOLT/M8×20 Vis	4	4	★
17-17	V401-260-0080-0	WASHER, SP/M8 Rondelle frein	4	4	★
17-18	V300-260-0080-0	NUT/M8 Erou	4	4	★
17- 0-2	1364-040-3001-0	BRAKE, PARKING SET Frein ensemble	1	1	★
17- 0-3	1373-407-2000-0	BRAKE, ASSY Frein ensemble		1	★ for cast-iron gear case
17- 0-4	1373-457-2000-0	BRAKE, SET Frein ensemble	1	1	★ for W-type
17-19	1364-400-0521-0	·LEVER, BRAKE Lever de frein	1	1	★
17-19a	1364-407-2000-0	·LEVER, BRAKE ASSY Lever de frein	1	1	Ⓟ★
17-20	1364-407-0010-0	·WIRE, BRAKE Cable	1	1	★
17-21	1364-407-0020-0	·SPRING, BRAKE Ressort	1	1	★
17-22	1364-407-1000-0	·ARM, BRAKE Bras	1	1	★
17-22-1	1373-407-2100-0	·ARM, BRAKE Bras		1	★ for cast-iron gear case
17-22-2	1373-457-2100-0	·ARM, BRAKE Bras	1	1	★ for W-type
17-23	1351-203-0010-0	·SHOE, BRAKE Sabot de frein	1	1	★
17-24	V300-260-0060-0	·NUT/M6 Erou	2	2	★
17-25	V401-160-0060-0	·WASHER, SP/M6 Rondelle frein	2	2	★
17-26	1364-202-0010-0	·SPRING, TORQUE/28 Ressort	1	1	★
17-26-1	1373-407-2010-0	·SPRING, TORQUE/37 Ressort		1	★ for cast-iron gear case
17-26-2	1380-202-0010-0	·SPRING, TORQUE/27 Ressort	1	1	★ for W-type
17-27	3750-271-0050-0	·COLLAR Collier	1	1	★ for cast-iron gear case no use for W-type
17-28	V500-153-0025-0	·PIN, SPLIT/3×25 Goupille fendue	1	1	★

Ref No. Réf N°	Parts No. Pièces N°	Description Désignation	Model & Q'ty Modél & Quant		Remarks Remarques
			KC350	KC350F	
17-29	1364-952-0010-0	• MARK, BRAKE Etiquette	1	1	★
17-30	1364-917-0013-0	PULLEY/100 Poulie	1	1	} spline-type
17-31	1364-917-0031-0	PLATE Plaque	1	1	
17-32	V200-360-6020-0	BOLT/M6×20 Vis	2	2	
17-33	V401-160-0060-0	WASHER, SP/M6 Rondelle frein	2	2	
17-34	V201-460-8035-0	BOLT/M8×35 Vis	1	1	
17-35	V401-260-0080-0	WASHER, SP/M8 Rondelle frein	1	1	

Fig. 18

RECOIL STARTER (4 cycle type)

Lanceur

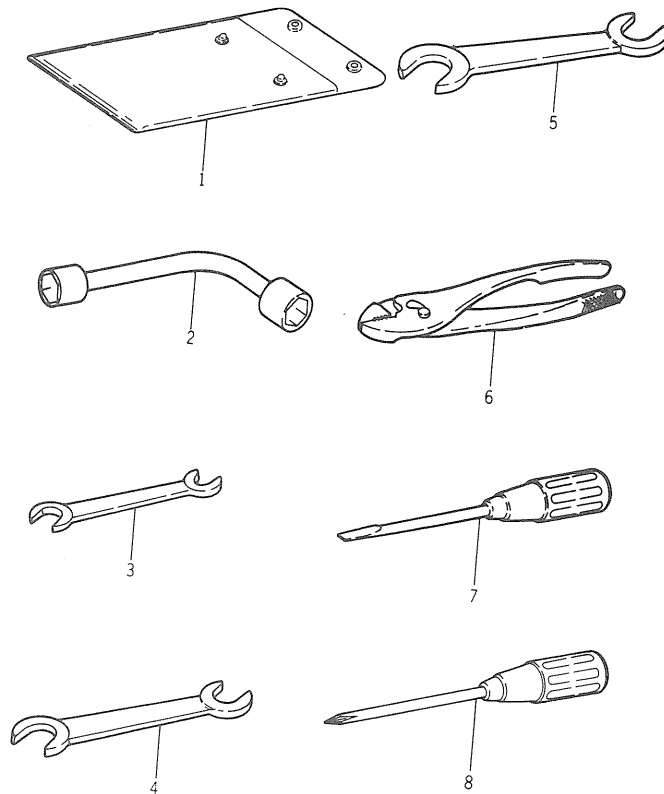


Ref No. Réf N°.	Parts No. Pièces N°.	Description Désignation	Model & Q'ty Modél & Quant		Remarks Remarques
			KC350	KC350F	
18- 1	1349-100-0520-0	STARTER, RECOIL ASSY Lanceur complet	1	1	
18- 2	1349-121-0020-0	·BODY, CAM Bobine	1	1	
18- 3	1329-121-0060-0	·RATCHET Cliquet	3	3	
18- 4	1329-121-0070-0	·SPRING, SPIRAL Ressort	1	1	
18- 5	1329-121-0080-0	·FELT, O L Bague de graissage	1	1	
18- 6	1329-121-0090-0	·PLATE Plaque	1	1	
18- 7	1329-121-0100-0	·SPRING Ressort	1	1	
18- 8	1329-121-0110-0	·WASHER Rondelle	2	2	
18- 9	1329-121-0120-0	·RING, SNAP Collet d'axe	1	1	
18-10	1349-121-0030-0	·ROPE Cordon	1	1	
18-11	1329-121-0140-0	·HANDLE Poignée	1	1	
18-12	1329-121-0150-0	·METAL, ROPE RETAINER Butee de cable	1	1	
18-13	1349-121-0040-0	·PULLEY, STARTER Poulie d'entraînement	1	1	
18-14	1349-121-0050-0	·SPRING, RETURN Ressort	1	1	
18-15	1349-121-0060-0	·MARK, CAUTION Etiquette	1	1	
18-16	V11116-600080	SCREW/M6×8 Vis	3	3	
18-17	V40116-000600	WASHER, SP/M6 Rondelle frein	3	3	
18-18	V11116-600120	SCREW/M6×12 Vis	3	3	
18-19	V40116-000600	WASHER, SP/M6 Rondelle frein	3	3	
18-20	1364-121-2400-0	STARTER, RECOIL ASSY Lanceur complet		1	} one ratchet type KC350 #009311~ KC350F #506601~
18-21	1364-121-2410-0	·CASE, SUB Carter de lanceur		1	
18-22	1364-121-2420-0	·REEL, SUB Bobine de renvidage		1	
18-23	1372-121-2240-0	·HANDLE A Poignée		1	
18-24	1364-121-2430-0	·ROPE Cordon		1	
18-25	1364-121-2440-0	·PULLEY, ENGINE Poulie d'entraînement		1	
18-26	1364-121-2450-0	·RATCHET Cliquet		1	
18-27	1364-121-2460-0	·GUIDE, RATCHET Palier primaire		1	
18-28	1364-121-2470-0	·WASHER Rondelle		1	
18-29	1353-121-2070-0	·WASHER Rondelle		1	
18-30	1353-121-2080-0	·RING,SNAP/E Collet d'axe		1	
18-31	1353-121-2090-0	·SPRING,COIL Ressort spirale		1	
18-32	1364-121-2480-0	·SPRING, FLAT Rissort		1	

Fig. 19

TOOLS

Outils



Ref No. Réf N°.	Parts No. Pièces N°.	Description Désignation	Model & Q'ty Modél & Quant		Remarks Remarques
			KC350	KC350F	
19- 1	1329-906-0011-0	BAG, TOOL Trousse a outils	1	1	
19- 2	1305-906-0010-0	SPANNER, BOX L-TYPE Cle a pipe	1	1	
19- 3	V92315-190210	SPANNER/19-21 Cle plate	1	1	No. 1-7250 FNo. 1-101000
19- 3a	V92055-190220	SPANNER/19-22 Cle plate	1	1	No. 7251- FNo. 101001-
19- 4	V92315-140190	SPANNER/14-19 Cle plate	1	1	No. 1-7250 FNo. 1-101000
19- 4a	V92055-130170	SPANNER/13-17 Cle plate	1	1	No. 7251- FNo. 101001-
19- 5	V92315-100120	SPANNER/10-12 Cle plate	1	1	No. 1-7250 FNo. 1-101000
19- 5a	V92055-120140	SPANNER/12-14 Cle plate	1	1	No. 7251- FNo. 101001-
19- 6	V93625-001500	PLIERS Pinces	1	1	
19- 7	V94019-061000	SCREWDRIVER Tournevis	1	1	
19- 8	V94519-061000	SCREWDRIVER Tournevis	1	1	

B I N E U S E S F 401 - F 601

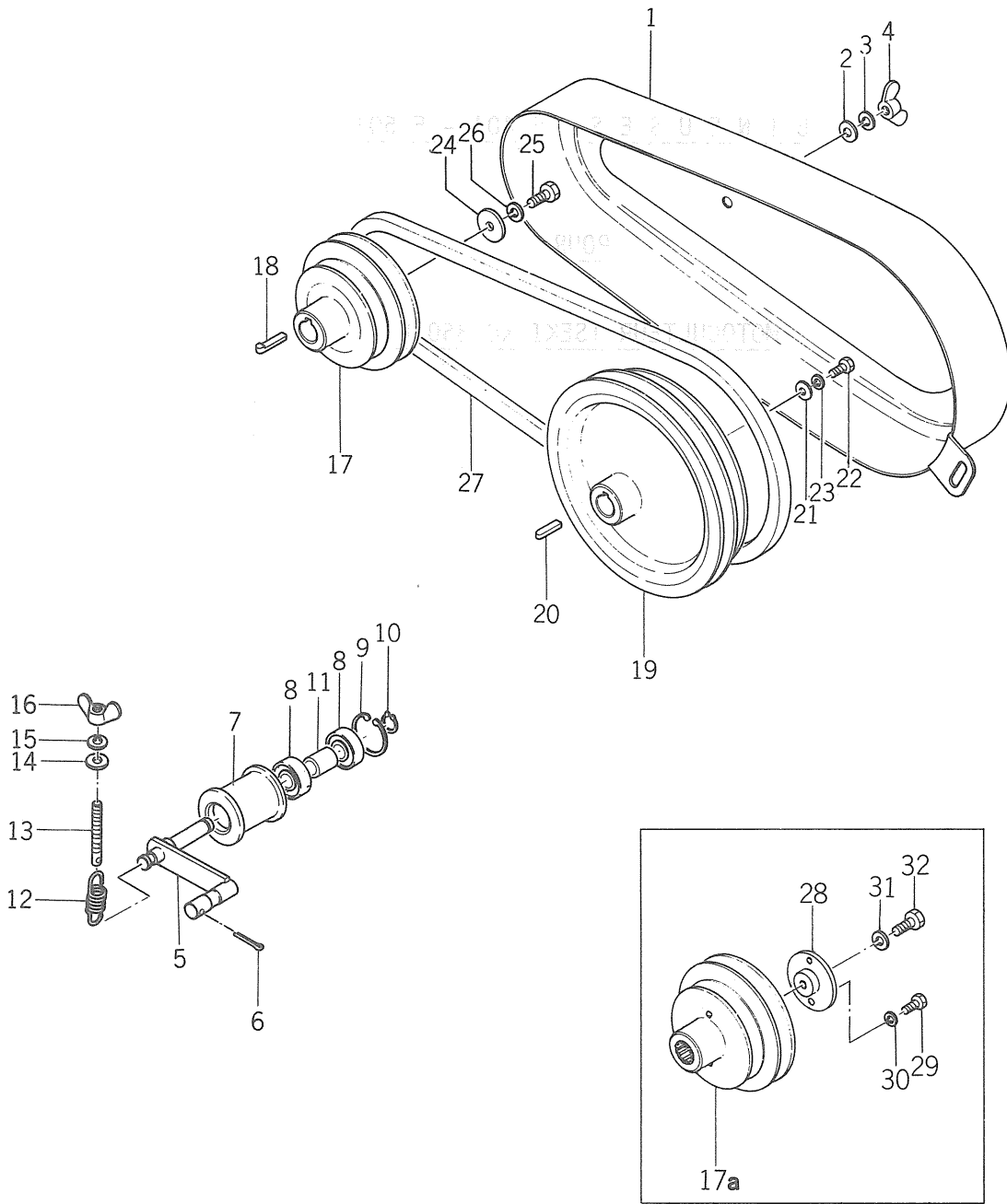
POUR

MOTOCULTEUR ISEKI KC 350 F

Fig. 20

ROTARY BELT DRIVE

Courroie intermediaire



Ref No. Réf N°.	Parts No. Pièces N°.	Description Désignation	Model & Q'ty Modél & Quant		Remarks Remarques
			F40-1	F60-1	
20- 1	1364-701-1000-0	COVER, BELT Carter de courroies	1	1	★
20- 2	V41316-000800	WASHER/M8 Rondelle	2	2	★
20- 3	V40126-000800	WASHER, SP/M8 Rondelle frein	2	2	★
20- 4	1323-721-0070-0	NUT, WING/M8 Ecrou a oreilles	2	2	★
20- 5	1364-701-2000-0	ARM, TENSION Tirant	1	1	★
20- 6	V50015-300250	PIN, SPLIT/3×25 Goupille fendue	1	1	★
20- 7	1329-202-0011-4	PULLEY, TENSION Galet tendeur	1	1	★
20- 8	V60014-062010	BEARING, RB/6201RS Roulement	2	2	★
20- 9	V70514-003200	RING, SNAP/C32 Collet d'axe	1	1	★
20-10	V70414-001200	RING, SNAP/C12 Collet d'axe	1	1	★
20-11	1329-202-0030-4	COLLAR, TENSION Collier	1	1	★
20-12	1325-401-0090-0	SPRING, MAIN CLUTCH Ressort	1	1	★
20-13	1349-701-0010-0	BOLT, TENSION Vis	1	1	★
20-14	V41316-000800	WASHER/M8 Rondelle	1	1	★
20-15	V40126-000800	WASHER, SP/M8 Rondelle frein	1	1	★
20-16	1323-721-0070-0	NUT, WING/M8 Ecrou a oreilles	1	1	★
20-17	1364-701-0010-0	PULLEY, V/70-91 Rea	1	1	★
20-17a	1364-701-0012-0	PULLEY, V/70-91 Rea	1	1	★ spline-type
20-18	1329-201-0030-0	KEY, MAIN SHAFT Clavette	1	1	★
20-19	1349-701-0030-0	PULLEY, V/160-180 Rea	1	1	★
20-20	1329-917-0020-0	KEY, PULLEY Clavette	1	1	★
20-21	1337-701-0040-0	WASHER/7×21×3 Rondelle	1	1	★
20-22	V20026-060160	BOLT/M6×16 Vis	1	1	★
20-23	V40116-000600	WASHER, SP/M6 Rondelle frein	1	1	★
20-24	1324-205-0020-0	WASHER, FOLLOWER Rondelle	1	1	★
20-25	V20126-080200	BOLT/M8×20 Vis	1	1	★
20-26	V40116-000800	WASHER, SP/M8 Rondelle frein	1	1	★
20-27	V81720-003400	BELT, V/SB34 Courroie de reas	1	1	★
20-28	1364-917-0031-0	PLATE Plaque	1	1	★
20-29	V20036-060200	BOLT/M6×20 7T Vis	2	2	★
20-30	V40116-000600	WASHER, SP/M6 Rondelle frein	2	2	★ spline-type
20-31	V40116-000800	WASHER, SP/M8 Rondelle frein	1	1	★
20-32	V20146-080350	BOLT/M8×35 9T Vis	1	1	★